

## SPECIES ACCOUNTS

Key to symbols commonly used in the species accounts.

As footnotes to thresholds:

- ? population size not accurately known
- + population too small for meaningful threshold
- \* where 1% of the national population is fewer than 50 birds, 50 is normally used as a minimum threshold for national importance
- \*\* a site regularly holding more than 20,000 waterbirds (excluding non-native species) qualifies as internationally important by virtue of absolute numbers
- † denotes that a qualifying level different to the national threshold has been used for the purposes of presenting sites in this report

In tables of important sites:

- no data available
- ( ) incomplete count
- † same meaning as used for thresholds
- ▲ site was of a higher importance status in the previous five-year period
- ▼ site was of a lower importance status in the previous five-year period
- <sup>1,2</sup> count obtained using different survey methodology from WeBS Core Counts (see table below)

Sources of additional information used in compiling tables of important sites are listed below. Non-WeBS counts are identified in the tables by the relevant number below given in superscript following the count.

- |  |  |
|--|--|
| 1 RSPB/Talisman Energy studies, <i>e.g.</i> Stenning (1998)                    | 30 WWT report to DTI. Aerial survey of Greater Wash strategic area |
| 2 WWT studies, <i>e.g.</i> Rees <i>et al.</i> (2000)                           | 31 All Wales Common Scoter Survey. WWT reports to CCW              |
| 3 Bean Goose Working Group, <i>e.g.</i> Smith <i>et al.</i> (1994)             | 32 All-Ireland Light-bellied Brent Goose Census                    |
| 4 RSPB <i>pers comm.</i>   | 33 Cormorant Roost Survey 2003                                     |
| 5 Lancashire Goose Report, <i>e.g.</i> Forshaw (1998)                          | 34 Scottish Bird Report records                                    |
| 6 SNH 'adopted' counts   | 35 Worden <i>et al</i> 2004  |
| 7 WWT data   | 36 RSPB data   |
| 8 Greenland White-fronted Goose Study, <i>e.g.</i> Fox and Francis (2004)      | 37 SNH data  |
| 9 SOTEAG reports, <i>e.g.</i> Heubeck (1998)                                   | 38 WWT UK-breeding Greylag Goose Survey                            |
| 10 WeBS Low Tide Counts  | 39 Frank Mawby <i>in litt.</i>                                     |
| 11 Roost counts  | 40 Shetland co-ordinated swan count                                |
| 12 Supplementary daytime counts  | 41 Supplementary daytime counts                                    |
| 13 WWT/JNCC National Grey Goose Census   | 42 Winter Gull Roost Survey  |
| 14 Firth of Clyde Eider counts, <i>e.g.</i> Waltho, C.M. (2004)                | 43 BTO/CCW Carmarthen Bay surveys                                  |
| 15 R. Godfrey ( <i>in litt.</i> )  | 44 KOS Great Crested Grebe records                                 |
| 16 SNH Greenland Goose Census  | 45 B McMillan ( <i>in litt.</i> )                                  |
| 17 R. MacDonald ( <i>in litt.</i> )  | 46 C Langton ( <i>in litt.</i> )                                   |
| 18 Little Egret Roost counts   | 47 B Yates ( <i>in litt.</i> )                                     |
| 19 D Carrington ( <i>in litt.</i> )  | 48 Tiree non-estuarine counts, per J Bowler                        |
| 20 C Hartley ( <i>in litt.</i> )   | 49 A Stevenson ( <i>in litt.</i> )                                 |
| 21 WWT unpublished data  | 50 D Tate ( <i>in litt.</i> )                                      |
| 22 Woolmer <i>et al.</i> 2001, Common scoter count in Carmart                  | 51 Uist Greylag Goose Management Committee                         |
| 23 Dorset Bird Report  | 52 Uists SPA wader survey (Ecology UK Ltd 2005)                    |
| 24 Judith Smith, Gr. Manchester County recorder                                | 53 P Wilson / Lancs Bird Report                                    |
| 25 BTO/Lucy Smith  | 54 W Aspin ( <i>in litt.</i> )                                     |
| 26 Paul Daw, County recorder for Argyll  | 55 Winter Swan Census  |
| 27 Steve Percival's counts of Lindisfarne – Svalbard Light-bellied Brent Geese | 56 JNCC shore-based count  |
| 28 JNCC report of aerial surveys for seaducks, divers                          | 57 RSPB Bean Goose counts  |
| 29 WWT report to DTI. Aerial survey of Thames strategic area                   | 58 SNH Argyll goose counts   |
|  | 59 WWT Dark-bellied Brent supplementary counts                     |

## Mute Swan

*Cygnus olor*

GB max: 21,307 Oct  
NI max: 1,622 Jan

International threshold (British population): 320  
International threshold (Irish population): 100  
Great Britain threshold: 375  
All-Ireland threshold: 100

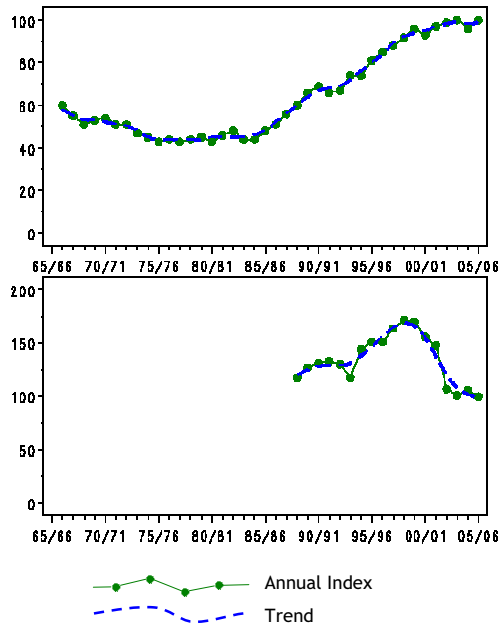


Figure 3.a, Annual indices & trend for Mute Swan for GB (above) & NI (below).

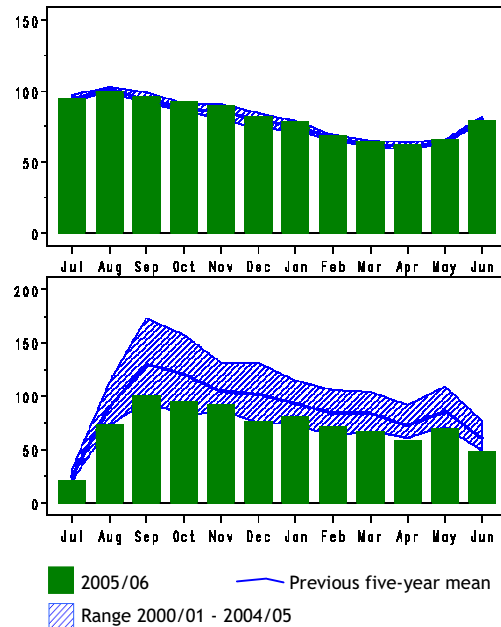


Figure 3.b, Monthly indices for Mute Swan for GB (above) & NI (below).

In Britain, the number of Mute Swans has shown considerable increase over the past twenty years leading to an estimated spring population of 31,700 in 2002 (Ward *et al.* 2007). The wintering population was estimated at 37,500 in the late 1990s and as movements of birds from the continent are rare, the differences between these estimates are likely to be due in part to late winter mortality, and in part to differences in estimation techniques. Since the 2002 national census was carried out, WeBS indices have remained roughly level, although the counted maximum in 2005/06 was the highest ever recorded and 7% higher than during 2001/02. It is widely believed that a reduction in the occurrences of lead poisoning, following the ban on the use of lead in fishing and restrictions for shooting, as well as milder winters, have contributed to the population increase seen in Britain over the past couple of decades (Rowell & Spray 2004).

Conversely, numbers in Northern Ireland remain low after falling from an all-time high in 1997/98; the Northern Ireland index fell again to its lowest level to date. However, numbers in the province remain relatively less well recorded due to the relatively small proportion of sites counted for WeBS, whilst the nature and extent of movement between sites in Northern Ireland and the Republic are also not fully understood.

The key sites for Mute Swan remain fairly consistent between years, although a low count at Loch Bee saw that site no longer support a mean peak in excess of the threshold for international importance. A very low total for the Ouse Washes was the lowest in a long, continuing decline, the peak now less than half that in 2001/02. The peak at the Loch of Harray was also very low. In Northern Ireland, a slight revival was noted at both Strangford Lough and Loughs Neagh & Beg.

	01/02	02/03	03/04	04/05	05/06	Mon	Mean
<b>Sites of international importance in the UK</b>							
Fleet and Wey	1,228	1,368	1,092	1,118	1,147	Sep	1,191
Loughs Neagh and Beg	1,423	1,510	920	949	1,024	Sep	1,165
Somerset Levels	1,084	(1,098)	(883)	1,076	1,024	Jan	1,071
Ouse Washes	1,110 <sup>12</sup>	782 <sup>12</sup>	606	693	469	Jan	732
Rutland Water	590	594	542	593	510	Aug	566
Tweed Estuary	464 <sup>12</sup>	414	582	614	460	Jul	507
Loch of Harray	597	672	522	467	251	Feb	502
Hornsea Mere	217	486	527 <sup>12</sup>	455	462	Aug	429
Loch Leven	506	550	526	202	319	Oct	421
Tring Reservoirs	282	447	322	404	346	Dec	360
Severn Estuary	339	284	(318)	390	390	Dec	351
Upper Lough Erne	306	323	272	449	300	Jan	330
Abberton Reservoir	187	387	379	318	373	Aug	329
Lower Lough Erne		199	(286)	(300)	309	Feb	274
Strangford Lough	183	180	193	94	133	Oct	157
Upper Quoile River	117	(71)	108	108	134	Jan	117
<b>Sites no longer meeting table qualifying levels in WeBS-Year 2005/2006</b>							
Loch Bee (South Uist)	200	297	407	394	267	Feb	313
<b>Other sites surpassing table qualifying levels in WeBS-Year 2005/2006 in Great Britain</b>							
Severn Estuary	339	284	(318)	390	390	Dec	351

## Black Swan

*Cygnus atratus*

Escape<sup>†</sup>

Native Range: Australia

GB max: 43 Sep

NI max: 1 Sep

The British maximum of 43 was similar to that of previous years. The peak count at Arnot Park Lake reached nine in July and remained between eight and six throughout the rest of the year. In total the species was recorded at 79 sites, six less than during the previous year and of which 74 were in England, two in Wales and two in Scotland. The only record of this species from Northern Ireland was of a single bird at Clea Lakes, Strangford Lough during September, February and March.

### Sites with three or more birds in 2005/06<sup>†</sup>

Arnot Park Lake	9 Jul
Fleet and Wey	8 Jul, Dec
River Kennet - Ramsbury to Chilton Foliat	5 Jul-Sep
Exe Estuary	4 Sep
Kingsmill Reservoir	4 Apr
Pagham Harbour	4 May
Abberton Reservoir	3 Oct, Nov, Jan, Feb
Aqualate Mere	3 Jul
Fairburn Ings	3 Jun
Thames Estuary	3 Nov

<sup>†</sup> as no British or All-Ireland thresholds have been set a qualifying level of three has been chosen to select sites for presentation in this report



*Bewick's Swan (Paul Doherty)*

**Bewick's Swan**  
*Cygnus columbianus*

GB max: 7,663 Jan  
NI max: 18 Dec

International threshold (*bewickii*): 200  
Great Britain threshold: 81  
All-Ireland threshold: 25\*

\*50 is normally used as a minimum threshold

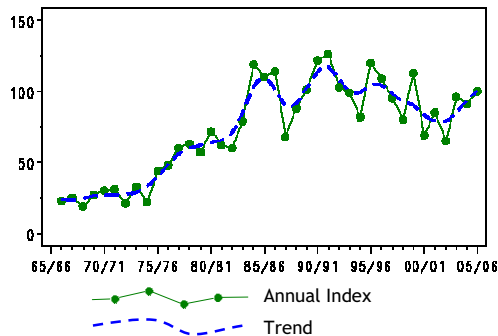


Figure 4.a, Annual indices & trend for Bewick's Swan for GB.

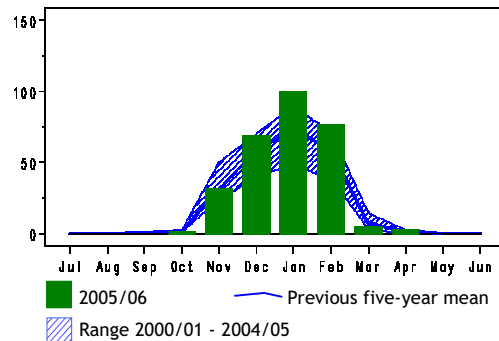


Figure 4.b, Monthly indices for Bewick's Swan for GB.

Following two consecutive years of record counts, the peak on the Ouse Washes this winter was lower again. However, as the peak count on the Nene Washes was higher than usual this year, this appears to have been due to local redistribution around the East Anglian fens, as opposed to any overall decrease. Indeed, the national maximum count in mid-January was the highest recorded for many years and the annual index suggests a rising trend. In the west, numbers remained low on the Severn Estuary, Martin Mere / Ribble Estuary and the Dee Estuary, whilst a second year of low counts at the Somerset Levels means that the site no longer supports nationally important numbers. Even further

west in Northern Ireland, the previous key site of Loughs Neagh & Beg saw an almost complete collapse in numbers, with the peak count only four birds in December, lower than the flock of 18 at Lough Foyle in February.

During the 2005/06 winter, the overall proportion of young in British flocks was assessed at 10.9%, below the mean value of the preceding five years (14.7%). However, mean brood size of successful pairs was slightly higher at 2.2 cygnets. Interestingly, there was a far higher proportion of young at WWT Slimbridge (17.7%) than elsewhere in the UK, although the total number of birds involved was low.

	01/02	02/03	03/04	04/05	05/06	Mon	Mean
<b>Sites of international importance in the UK</b>							
Ouse Washes	5,735 <sup>11</sup>	5,177 <sup>11</sup>	6,330 <sup>11</sup>	7,491 <sup>11</sup>	5,449 <sup>11</sup>	Dec	6,036
Nene Washes	347 <sup>11</sup>	1,068 <sup>11</sup>	790 <sup>11</sup>	262 <sup>11</sup>	1,649 <sup>11</sup>	Feb	823
Hickling Broad				282 <sup>55</sup>			282
Severn Estuary	310 <sup>7</sup>	345 <sup>7</sup>	230	223 <sup>7</sup>	225	Jan	267
Martin Mere and Ribble Estuary	296 <sup>7</sup>	315	221	175	(132)	Feb	252
St Benet's Levels	147	287	280				238
Breydon Wtr & Berney Marshes	85	240	220	237	231	Feb	203 ▲
<b>Sites of national importance in Great Britain</b>							
Old Romney			184 <sup>12</sup>				184
Walland Marsh	180	220	148	140	135	Feb	165
Dee Estuary (England & Wales)	(78)	(70)	(92)	(101)	63	Feb	81
<b>Sites no longer meeting table qualifying levels in WeBS-Year 2005/2006</b>							
Somerset Levels	108	(69)	(112)	21	22	Jan	66

## Whooper Swan *Cygnus cygnus*

International threshold: 210  
Great Britain threshold: 57  
All-Ireland threshold: 100

GB max: 8,051 Dec  
NI max: 2,764 Jan

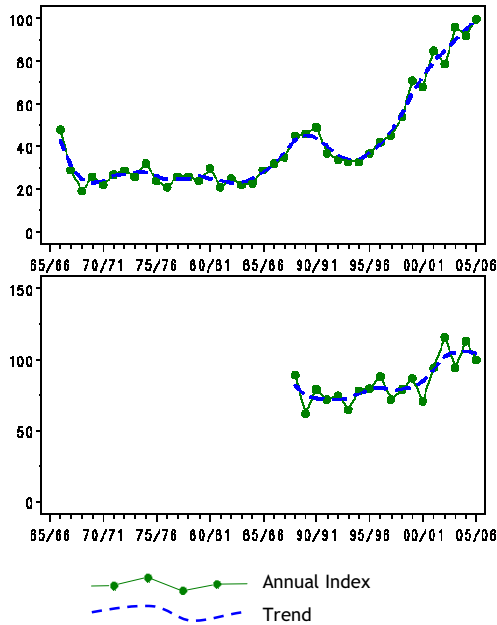


Figure 5.a, Annual indices & trend for Whooper Swan for GB (above) & NI (below).

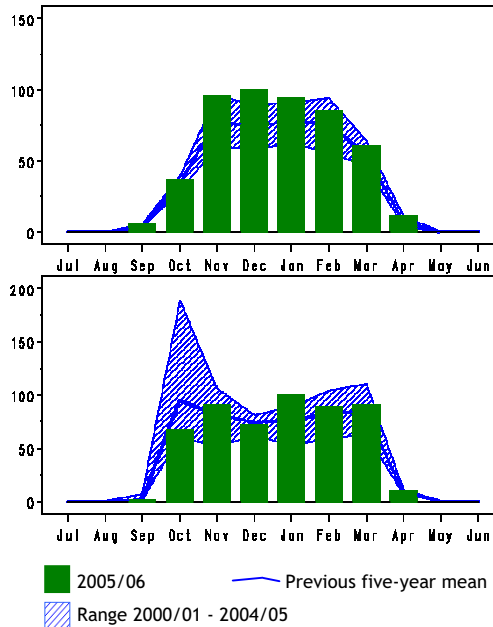


Figure 5.b, Monthly indices for Whooper Swan for GB (above) & NI (below).

Overall, counted numbers of Whooper Swans in the UK in 2005/06 were similar to the previous year, but in Britain, the annual index reached a new record high. The peak roost count on the Ouse Washes during the 2005/06 winter was lower than the two previous record peaks, but is still well above all counts prior to 2003/04. Elsewhere, relatively high counts were recorded at a number of sites, including Loch Eye & Cromarty Firth, River Clyde (Carstairs-Thankerton), River Earn (Lawhill Oxbows), Loch Heilen, Montrose Basin and the Humber Estuary. Conversely, peak counts were lower than usual at Loch of Wester and Vasa Loch (Shapinsay).

Small numbers of Whooper Swans in the summer months were almost all recorded from sites in Scotland, suggesting that most were of wild origin, probably largely birds which were injured or otherwise unfit to migrate to the

breeding grounds. The main arrival started from October, with peak numbers from November to February. Many were still present in March but a rapid decline took place by the time of the April count.

Assessment of flocks around the UK found 12.1% young overall, well below the five year average of 15.9%, with a mean brood size of 2.5 cygnets per successful pair. Particularly low numbers of juveniles were found at the Ouse Washes (8.8%), continuing the decline noted there in recent winters in the breeding success of birds wintering there.

	01/02	02/03	03/04	04/05	05/06	Mon	Mean
<b>Sites of international importance in the UK</b>							
Ouse Washes	2,894 <sup>11</sup>	2,745 <sup>11</sup>	3,624 <sup>11</sup>	4,397 <sup>11</sup>	3,547 <sup>11</sup>	Dec	3,441
Martin Mere and Ribble Estuary	1,762 <sup>7</sup>	1,770 <sup>7</sup>	1,597	2,081 <sup>55</sup>	1,666	Jan	1,775
Loughs Neagh and Beg	(1,532)	1,514	(867)	1,543	1,268	Mar	1,464
Lough Foyle	548	3,284	680	950 <sup>55</sup>	1,030	Jan	1,298
Upper Lough Erne	1,228 <sup>12</sup>	658	855	1,123	822	Feb	937
Loch of Strathbeg	(223)	(67)	794	355	680	Nov	610
Solway Estuary	(309)	340 <sup>7</sup>	(250)	508 <sup>55</sup>	(150)	Jan	424
Loch Eye and Cromarty Firth	230	141	322	275	518	Oct	297
Loans of Tullich				253 <sup>55</sup>			253
Bridge of Crathies				(220) <sup>55</sup>			(220)
<b>Sites of national importance in Great Britain</b>							
Wigtown Bay	156	(135)	255	205	(165)	Jan	205
Norham West Mains				184 <sup>55</sup>	190	Mar	187
Loch of Wester	341			128	56	Jan	175 ▼
R Clyde: Carstairs to Thankerton	242	(101)	91	110	220	Nov	166
Black Cart Water	238 <sup>2</sup>	176 <sup>2</sup>	151 <sup>2</sup>	112	112	Dec	158
Lawers Pond					152	Oct	152 ▲
Loch Heilen			24	60	360	Oct	148 ▲
R. Nith - Keltonbank to Nunholm	125	(108)	165	(104)			145
Loch a' Phuill (Tiree)	83	168	118	194	132	Nov	139
Tarbat Ness		0	44	306	202	Feb	138
Nene Washes	110 <sup>11</sup>	143 <sup>11</sup>	111 <sup>11</sup>	104 <sup>11</sup>	215 <sup>11</sup>	Feb	137
Killimster Loch	135						135
Leven Cut				125 <sup>55</sup>			125
East Fenton Farm Reservoir				89	156	Jan	123
Inner Moray and Inverness Firth	173	60	165	27	166	Jan	118
Strathearn South Kinkell				111 <sup>55</sup>			111
Loch Insh and Spey Marshes	92	91	110	124	82	Jan	100
R. Eden: Grinsdale- Sandsfield					98	Mar	98 ▲
River Tweed: Kelso-Coldstream	60	116	109	75	132	Feb	98
Caistron Quarry	71	67	164	96	66	Feb	93
Lindisfarne	15	(90)	(139)	71	119 <sup>10</sup>	Jan	87
Loch of Lintrathen	10	166	93	69			85
Kinnordy Loch	116	82	35	96	58	Mar	77
Lower Derwent Ings	61	91	52	102	74	Dec	76
Morecambe Bay	125	6	(20)	63	(100)	Dec	74 ▲
Vasa Loch Shapinsay		68	96	119	12	Dec	74
Loch of Spiggie	47	86	89	69	77	Oct	74
Farmland near Monymusk				65 <sup>55</sup>			65
River Earn - Lawhill Oxbows	12	0	0	113	193	Nov	64 ▲
Loch Tuamister (Lewis)				63 <sup>55</sup>			63
Merryton Haughs					62	Mar	62 ▲
Drem Pools				8	115	Dec	62 ▲
Broubster Leans				75 <sup>55</sup>	49	Feb	62
Milldam and Balfour Mains Pools	98	41	86	0	84	Nov	62
Farmland near Whitekirk				61 <sup>55</sup>			61
Lower Teviot Valley	(50)	(29)		(58)			(58)
St Benet's Levels	6	58	108				57
<b>Sites of all-Ireland importance in Northern Ireland</b>							
Strangford Lough	212	191	150	244	242	Nov	208
Lough McNea Lower	76 <sup>12</sup>			124	103	Dec	101 ▲
<b>Sites no longer meeting table qualifying levels in WeBS-Year 2005/2006</b>							
Dornoch Firth	53 <sup>10</sup>	23	94	18	84	Jan	54
Ravenstruther		0	48	56	56	Jan	40
Forth Estuary	(20)	(24)	62 <sup>10</sup>	19	(7)	Apr	41
<b>Other sites surpassing table qualifying levels in WeBS-Year 2005/2006 in Great Britain</b>							
Montrose Basin	1	10	24	28	181	Feb	49
Humber Estuary	9	(21)	14 <sup>10</sup>	8	(115)	Nov	33
Dornoch Firth	53 <sup>10</sup>	23	94	18	84	Jan	54
St Johns Loch				10	80	Nov	45
Linne Mhuirich		47	36	10	65	Oct	40
Uyea Sound	15	23	37	47	64	Nov	37
River Earn: Millands Msh & Flds	84	0	(76)	15	63	Nov	48
The Wash	9	21	18	15	57	Nov	24

---

## Coscoroba Swan

*Coscoroba coscoroba*

Escape  
Native Range: S America

GB max: 1 Nov  
NI max: 0

A single Coscoroba Swan was on Burton Marsh on the Dee Estuary during November. This is the second ever recorded during WeBS,

the first being on the River Usk, which stayed throughout winter 2000/01.

---

## Chinese Goose

*Anser cygnoides*

Escape  
Native Range: E Asia

GB max: 15 Dec  
NI max: 0

Chinese Goose (the domesticated form of the Swan Goose) was recorded at ten sites across the UK, seven in England, two in Scotland and one in Wales. The national maximum was

down on the previous year, being more in line with figures from 2003/04. The highest single site total was of six at Diss Mere in December.

---

## Bean Goose

*Anser fabalis*

International threshold: 800  
Great Britain threshold: 4\*  
+

GB max: 484 Jan  
NI max: 0

*\*50 is normally used as a minimum threshold*

Following the relatively large arrival of Tundra Bean Geese (*Anser fabalis rossicus*) during the 2004/05 winter, the situation was more typical in 2005/06. In fact, away from the two main wintering sites of Taiga Bean Geese (*Anser fabalis fabalis*), the species was recorded from only ten other sites, with only the Ouse Washes and North Warren holding more than three birds. At a small number of sites, presumed escaped birds were recorded during the summer months.

In the Slamannan area, counts increased once again to a new peak of 300 birds, the highest count of this species in Britain since 1994 and the first site outside Norfolk ever to reach 300. The first few geese returned in September but numbers were fairly constantly

high between October and February with virtually all birds gone by March. Although the peak at the Middle Yare Marshes represented a slight increase on the previous winter, peak counts there have remained at less than 200 for four years in succession. Numbers were lower than average until January, when a notable arrival occurred, followed by a similarly rapid disappearance by February.

At Slamannan, about 14.4% of geese were first-year birds, with an average of 1.25 young per successful pair recorded. These assessments were made in November and after this time it becomes increasingly difficult to assess the age of Bean Geese; for this reason, it is not possible to assess the breeding success of the Yare Valley flock.

	01/02	02/03	03/04	04/05	05/06	Mon	Mean
<b>Sites of national importance in Great Britain</b>							
Slamannan Area	192 <sup>3</sup>	231 <sup>3</sup>	235 <sup>3</sup>	262 <sup>3</sup>	300 <sup>3</sup>	Jan	244
Middle Yare Marshes	272 <sup>4</sup>	183 <sup>4</sup>	140	156 <sup>36</sup>	169 <sup>57</sup>	Jan	184
Ouse Washes	4 <sup>12</sup>	8 <sup>12</sup>	4	87 <sup>11</sup>	9	Jan	22
Walland Marsh	0	0	0	86	0		17
Nth Warren & Thorpeness Mere	0	0	3 <sup>12</sup>	38	10 <sup>12</sup>	Feb	10
Fleet and Wey	(26)	6	0	0	0		6
Abberton Reservoir	22	0	0	0	(0)		6
Somerset Levels	0	(0)	0	14	(0)		5
Balnakeil Bay			5 <sup>12</sup>				5
Whitemoor Haye	3	0	0	17	0		4

## Pink-footed Goose

*Anser brachyrhynchus*

International threshold: 2,700  
Great Britain threshold: 2,400

+

GB max: 258,247 Nov  
NI max: 4 Oct

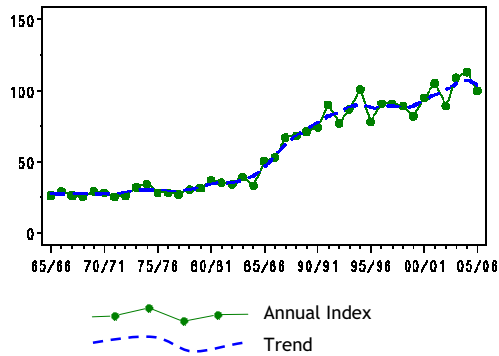


Figure 6.a, Annual indices & trend for Pink-footed Goose for GB.

Given that this species is not well covered by standard WeBS counts (as most birds use waterbodies only for roosting overnight spending the day on surrounding farmland), Pink-footed Geese are predominantly surveyed by dedicated coordinated roost counts at the key sites as well as the Goose and Swan Monitoring Program ([www.wwt.org.uk/research/monitoring/goose\\_and\\_swan.asp](http://www.wwt.org.uk/research/monitoring/goose_and_swan.asp)). The national index is also based on these roost counts, and in autumn 2005 fell somewhat from the record level of the previous two years. Where possible, the British counts have been synchronised with counts from Iceland and the Faeroe Islands, to try to get as full a picture of the population as possible, although in autumn 2005 the vast majority of birds were present in Britain from October onwards, when the first coordinated count take place. The British peak total count in autumn 2005 was of 258,247 birds, although consideration of sites not counted during that

month, plus the addition of a small number on the Faeroes, increased the estimate of the population in that month to 268,650. This represented a decline of 8% on the peak estimate for autumn 2004.

As usual, a major arrival was noted at Loch of Strathbeg in September, with the huge count of 68,000 here being both the highest single site count of the year, and an all-time record for this site. A large proportion of birds was present in Scotland in October but by November, many had moved south to Norfolk and by December over half of the total population was present in this county. In Norfolk, a record roost total of 66,000 was noted at Holkham/Wells area, although this count could not be assigned to either single site in the table below, whilst the peak at Scolt Head was slightly lower than in recent years, albeit still extremely high. The January roost count at Snettisham was the highest there to date. In southwest Lancashire, In southwest Lancashire, the main arrival of geese was earlier than usual and October numbers were high; many appeared to have left by November but numbers were high again in December (Forshaw 2006). Higher than average peak counts were also noted from Loch Leven and Loch Spynie, whilst the Findhorn Bay roost was relatively low this autumn. Breeding success was estimated at 18.1% young, which was lower than for the preceding three years but still comparable to the mean of most recent 5 yrs. The average of 1.7 young per successful pair was also lower than average.

	01/02	02/03	03/04	04/05	05/06	Mon	Mean
<b>Sites of international importance in the UK</b>							
Scolt Head	33,900 <sup>13</sup>	62,500 <sup>13</sup>	80,000 <sup>11</sup>	66,000 <sup>12</sup>	55,000 <sup>13</sup>	Dec	59,480
Loch of Strathbeg	46,898 <sup>13</sup>	39,900	66,000 <sup>13</sup>	65,000 <sup>13</sup>	68,000 <sup>13</sup>	Sep	57,160
Holkham Bay	45,000 <sup>13</sup>	33,800 <sup>13</sup>	47,750 <sup>13</sup>	58,000 <sup>12</sup>	50,000 <sup>13</sup>	Jan	46,910
Snettisham	35,000 <sup>13</sup>	37,050 <sup>13</sup>	27,350 <sup>13</sup>	35,360 <sup>12</sup>	49,610 <sup>13</sup>	Jan	36,874
Southwest Lancashire	33,180 <sup>13</sup>	31,645 <sup>13</sup>	27,025 <sup>13</sup>	43,950 <sup>5</sup>	31,860 <sup>13</sup>	Oct	33,532
West Water Reservoir	23,270 <sup>13</sup>	(40,000) <sup>13</sup>	34,210 <sup>13</sup>		28,240 <sup>13</sup>	Oct	31,430
Montrose Basin	38,669 <sup>13</sup>	11,500 <sup>13</sup>	10,149 <sup>13</sup>	31,896 <sup>13</sup>	30,181 <sup>13</sup>	Nov	24,479
Morecambe Bay	14,100 <sup>13</sup>	14,600 <sup>5</sup>	17,050 <sup>5</sup>	26,910 <sup>5</sup>	20,980 <sup>13</sup>	Jan	18,728
Ythan Estuary and Slains Lochs	13,900 <sup>13</sup>	19,600 <sup>13</sup>	19,200 <sup>13</sup>	16,200	(1,800)	Jan	17,225
Loch Leven	16,200 <sup>13</sup>	(12,874) <sup>13</sup>	15,120 <sup>13</sup>	14,750	22,175 <sup>13</sup>	Oct	17,061
Aberlady Bay	13,740 <sup>13</sup>	22,200 <sup>13</sup>	15,040 <sup>13</sup>	18,430 <sup>13</sup>	14,250 <sup>13</sup>	Nov	16,732
Findhorn Bay	14,000 <sup>13</sup>		25,000 <sup>13</sup>	18,000 <sup>13</sup>	9,400 <sup>13</sup>	Oct	16,600

	01/02	02/03	03/04	04/05	05/06	Mon	Mean
Loch Spynie	9,100 <sup>13</sup>	11,700 <sup>13</sup>	11,100 <sup>13</sup>	27,000 <sup>13</sup>	23,000 <sup>13</sup>	Nov	16,380
Loch of Skene	13,175 <sup>13</sup>	(8,420) <sup>13</sup>	(8,500) <sup>13</sup>	12,000 <sup>13</sup>	17,730 <sup>13</sup>	Dec	14,302
Carsebreck and Rhynd Lochs	14,500 <sup>13</sup>	10,320 <sup>13</sup>	11,450 <sup>13</sup>	8,770 <sup>13</sup>	11,130 <sup>13</sup>	Oct	11,234
Breydon Wtr & Berney Marshes	4,380	7,100	17,100	12,784	11,213	Dec	10,515
Dupplin Lochs	17,500 <sup>13</sup>	9,500 <sup>13</sup>	14,100 <sup>13</sup>	2 <sup>13</sup>			10,276
Easterton - Fort George					10,000 <sup>13</sup>	Nov	10,000 ▲
Loch of Lintrathen	5,920 <sup>13</sup>	(6,440) <sup>13</sup>	11,100 <sup>13</sup>	8,921 <sup>13</sup>	9,790 <sup>13</sup>	Oct	8,933
Hule Moss	8,600 <sup>13</sup>	5,850 <sup>13</sup>	14,200 <sup>12</sup>	7,950 <sup>13</sup>	6,000	Oct	8,520
Loch Tullybelton				6,500 <sup>13</sup>			6,500
Horse Mere	(5,000) <sup>13</sup>	4,000 <sup>13</sup>	8,200 <sup>13</sup>	7,231 <sup>12</sup>	6,240 <sup>13</sup>	Dec	6,418
Cameron Reservoir	15,823	3,000	8,900 <sup>13</sup>	2,692 <sup>13</sup>	521	Nov	6,187
R Clyde: Carstairs to Thankerton	11,000	3,350	5,300	(3,050)	4,500	Oct	6,038
Solway Estuary	(5,550)	(4,075)	(10,243)	2,612 <sup>13</sup>	(6,862)	Feb	5,868
Wigtown Bay	5,316 <sup>13</sup>	(4,747)	8,662 <sup>13</sup>	(7,219)	802	Feb	5,500
Humber Estuary	4,300 <sup>13</sup>	4,620 <sup>13</sup>	6,562	(5,638)	3,909	Nov	5,006
Holme and Thornham					5,000 <sup>13</sup>	Jan	5,000 ▲
Lindisfarne	6,450 <sup>13</sup>	(3,679)	1,496	5,300 <sup>13</sup>	5,800 <sup>13</sup>	Nov	4,762
Norton Marsh					4,500 <sup>13</sup>	Oct	4,500 ▲
Tay Estuary	11,385 <sup>13</sup>	2,700 <sup>13</sup>	2,425 <sup>13</sup>	4,560 <sup>13</sup>	0		4,214
Fala Flow	7,500 <sup>13</sup>	2,790 <sup>13</sup>	5,450 <sup>13</sup>	741 <sup>13</sup>			4,120
Strathearn (West)		4,100 <sup>13</sup>					4,100
Heigham Holmes	2,500 <sup>13</sup>				5,670 <sup>13</sup>	Jan	4,085 ▲
Loch Eye and Cromarty Firth	367 <sup>13</sup>	14,050 <sup>13</sup>	546	900	3,226	Dec	3,818
River Tay - Haughs of Kercock				4,000 <sup>13</sup>	3,500 <sup>13</sup>	Nov	3,750
River Nith - Keltonbank/Nunholm	(1,200)	(470)	(3,710)	(950)			(3,710)
Tay and Isla Valley	2,133 <sup>13</sup>	2,497 <sup>13</sup>	4,134 <sup>13</sup>	4,000	3,500	Nov	3,253
Holburn Moss	20	4,250 <sup>13</sup>	6,500 <sup>13</sup>	2,300 <sup>13</sup>	2,950 <sup>13</sup>	Oct	3,204
Skinflats	3,800 <sup>13</sup>	1,900 <sup>13</sup>	3,250 <sup>13</sup>	2,530 <sup>13</sup>	3,980 <sup>13</sup>	Oct	3,092
Rossie Bog	50 <sup>13</sup>			6,290 <sup>13</sup>	2,250 <sup>13</sup>	Nov	2,863 ▲
Lake of Menteith	3	4,515 <sup>13</sup>	4,026 <sup>13</sup>	5,357 <sup>13</sup>	11	Mar	2,782
<b>Sites no longer meeting table qualifying levels in WeBS-Year 2005/2006</b>							
Thornham			950 <sup>13</sup>				950
<b>Other sites surpassing table qualifying levels in WeBS-Year 2005/2006 in Great Britain</b>							
Folly Loch and Fairington Fields	1,800 <sup>13</sup>	32	5,500	4	4,563 <sup>13</sup>	Nov	2,380
Lochhill				0	3,525 <sup>12</sup>	Sep	1,763

## European White-fronted Goose

*Anser albifrons albifrons*

International threshold: 10,000

Great Britain threshold: 58

All-Ireland threshold: +

GB max: 2,350 Feb

NI max: 0

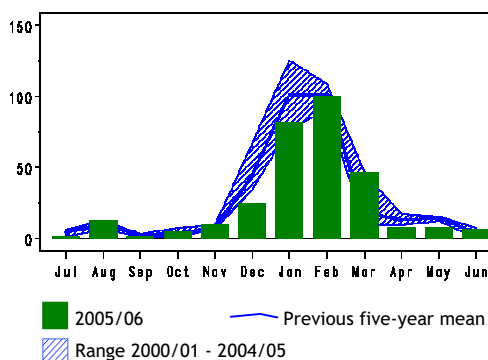
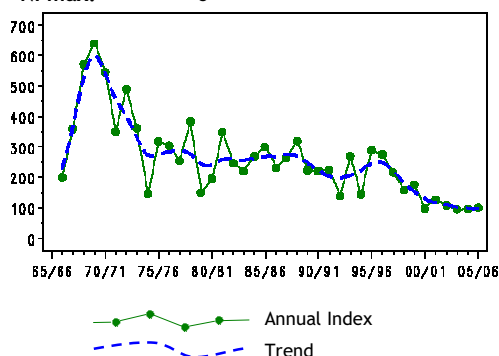


Figure 7.a, Annual indices & trend for European White-fronted Goose for GB.

Figure 7.b, Monthly indices for European White-fronted Goose for GB.

With the notable exception of WWT Slimbridge on the Severn Estuary, the key sites for European White-fronted Goose are extremely concentrated in the southeast of Britain, from Norfolk to Kent and seldom

more than 20 km inland. Away from the tabulated key sites, European White-fronted Geese were recorded from a further 32 sites, virtually all in England. Although large numbers of European White-fronted Geese

continue to migrate from their breeding grounds in arctic Russia to continental northwest Europe, the annual British index shows that numbers here remain at a very low level compared to previous decades, although are roughly stable since the turn of the century. A look at the monthly indices reveals that this is a mid-winter bird here now, with the peak clearly occurring in January and February and numbers outside these two months very much lower. However, the peak of 2350 in February was the highest recorded by WeBS since the 2001/02 winter suggesting that the recent downturn in numbers has at least halted.

At the main sites, peak numbers were below their recent averages on the Severn Estuary, the Middle Yare Marshes and the Suffolk

coastal strip of Minsmere, North Warren and the Alde Estuary. A flock of 86 birds on the Thames Estuary was sufficient to cause the five-year peak mean for the site to exceed the national importance threshold. The peak count at the Ouse Washes was the highest there since 1996, whilst the Stodmarsh flock was the highest count ever recorded at this site.

The overall proportion of young, assessed during January & February 2006 at six sites, was 34.3%, with a mean brood size of 3.01 young per successful pair. Prior to 2004/05, productivity estimates for European White-fronted Geese were only carried out at WWT Slimbridge; the proportion of young at this site in 2005/06 (31.6%) was the highest recorded in the past 13 years.

	01/02	02/03	03/04	04/05	05/06	Mon	Mean
<b>Sites of national importance in Great Britain</b>							
Severn Estuary	1,250 <sup>12</sup>	990 <sup>10</sup>	780 <sup>12</sup>	745 <sup>7</sup>	750	Jan	903
Swale Estuary	360	655	327	(398)	430	Feb	443
North Norfolk Coast	380	347	540	340	404	Jan	402
Dungeness Gravel Pits	355	460	205 <sup>12</sup>	110	250	Feb	276
Walland Marsh	450	300	140	137	310	Mar	267
Breydon Wtr & Berney Marshes	110	181	455	267	290	Mar	261
Nth Warren & Thorpeness Mere	250	310 <sup>12</sup>	190 <sup>12</sup>	302	200	Mar	250
Alde Complex	5 <sup>10</sup>	385	54	25	12	Jan	96
Middle Yare Marshes	74	89	120	109	76	Jan	94
Thames Estuary	(41)	89	42	(16)	86	Feb	72 ▲
Minsmere	120	1	175	9	2	Mar	61
<b>Other sites surpassing table qualifying levels in WeBS-Year 2005/2006 in Great Britain</b>							
Stodmarsh NNR & Collards Lagn	5	0	0	0	122	Feb	25
Ouse Washes	1	1	15	19	79	Feb	23

### Greenland White-fronted Goose

*Anser albifrons flavirostris*

International threshold: 270  
 Great Britain threshold: 209  
 All-Ireland threshold: 140

GB max: 14,287 Mar  
 NI max: 83 Feb

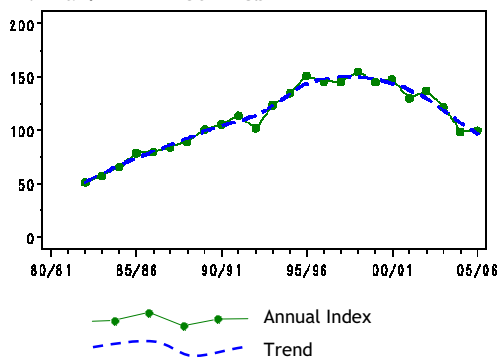


Figure 8.a, Annual indices & trend for Greenland White-fronted Goose for GB.

The annual censuses by Greenland White-fronted Goose Study were carried out in December 2005 and March 2006. In Britain, these located 13,609 and 14,287 birds

respectively. In March 2006, 10,608 were also counted in Ireland (75% of these at Wexford Slobs), leading to a world population of 24,895, the lowest spring total since 1988. The decision to ban hunting of Greenland White-fronted Geese on migration in Iceland took effect from autumn 2006, and so will not have affected the numbers reported here. The first indications of any effect of this ban may become apparent in next year's *Waterbirds in the UK* report.

In Scotland, the most important site remains Islay but peak numbers fell once again to their lowest levels for many years. Other sites where the count fell below the recent average included Rhunahaorine, Loch Lomond and Colonsay, latterly, where numbers returned to normal after the high count of 2004/05. Mean peak numbers at Clachan & Whitehouse and

Loch of Mey were no longer sufficient to exceed the threshold for national importance, although counts for Eriska/Benderloch did reach this level. The isolated flock at the Dyfi Estuary in Wales declined again slightly in numbers, from 92 in 2004/05 to a peak of 84 this winter.

Although breeding success increased slightly compared to 2004, the value of 8.6% young remained well below the long-term average. The mean brood size of 3.08 young per successful pair (with the largest broods on

Islay with a value of 3.58 young per successful pair) was higher than the long-term average. The fact that fewer pairs are nesting successfully, but those that do so are still productive, could imply that it is the available area for nesting that is declining, and not its quality. This would fit in with observations that Lesser Canada Geese are increasingly occupying some of the breeding range of the Greenland White-fronted Geese and exhibit behavioural dominance over the latter.

	01/02	02/03	03/04	04/05	05/06	Mon	Mean
<b>Sites of international importance in the UK</b>							
Island of Islay	12,261 <sup>16</sup>	12,254 <sup>6</sup>	11,272 <sup>6</sup>	8,350 <sup>8</sup>	7,456 <sup>8</sup>	Dec	10,319
Machrihanish	1,448 <sup>8</sup>	1,501 <sup>8</sup>	1,377 <sup>6</sup>	1,407 <sup>8</sup>	1,433 <sup>8</sup>	Mar	1,433
Rhunahaorine	1,594 <sup>8</sup>	1,450 <sup>8</sup>	1,156 <sup>6</sup>	894 <sup>8</sup>	955 <sup>8</sup>	Mar	1,210
Tiree	1,076 <sup>8</sup>	1,093 <sup>8</sup>	1,093 <sup>16</sup>	1,133 <sup>36</sup>	1,112 <sup>8</sup>	Mar	1,101
Isle of Coll	705 <sup>8</sup>	611 <sup>8</sup>	495 <sup>8</sup>	814 <sup>8</sup>	778	Oct	681
Isle of Colonsay	104 <sup>8</sup>	87 <sup>8</sup>	79 <sup>6</sup>	1,718 <sup>6</sup>	111 <sup>58</sup>	Mar	420
Keills Peninsula & Isle of Danna	403 <sup>8</sup>	411 <sup>8</sup>	377 <sup>6</sup>	338 <sup>8</sup>	344 <sup>8</sup>	Mar	375
Stranraer Lochs	500 <sup>8</sup>	365 <sup>8</sup>	281 <sup>8</sup>	257 <sup>8</sup>			351
Isle of Lismore	295 <sup>8</sup>	310 <sup>8</sup>	290 <sup>8</sup>	310 <sup>8</sup>	320 <sup>8</sup>	Mar	305
Loch Lomond	294 <sup>8</sup>	450 <sup>8</sup>	260 <sup>8</sup>	240 <sup>8</sup>	210 <sup>8</sup>	Dec	291
<b>Sites of national importance in Great Britain</b>							
Loch Ken	326 <sup>8</sup>	275 <sup>8</sup>	300 <sup>8</sup>	215 <sup>8</sup>	220 <sup>8</sup>	Mar	267 ▼
<b>Sites no longer meeting table qualifying levels in WeBS-Year 2005/2006</b>							
Clachan and Whitehouse	100 <sup>8</sup>	250 <sup>8</sup>	215 <sup>6</sup>	209 <sup>8</sup>	193 <sup>8</sup>	Dec	193
Loch of Mey	260 <sup>8</sup>	208 <sup>8</sup>	196 <sup>8</sup>	193 <sup>8</sup>	184 <sup>8</sup>	Feb	208
<b>Other sites surpassing table qualifying levels in WeBS-Year 2005/2006 in Great Britain</b>							
Eriska/Benderloch	159 <sup>8</sup>	133 <sup>8</sup>	154 <sup>8</sup>	145 <sup>8</sup>	239 <sup>8</sup>	Mar	166

## Lesser White-fronted Goose

*Anser erythropus*

Vagrant and escape  
Native Range: SE Europe, Asia

GB max: 2 Dec  
NI max: 0

Lesser White-fronted Geese were present at four sites during 2005/06; all records were of single birds and are likely to refer to escapes. These were at Testbourne Estate in August,

River Avon - Ringwood to Christchurch in September and December, East Park Hull in December and Llyn Alaw in January.

## Greylag Goose

*Anser anser*

### Icelandic Population

International threshold: 870  
Great Britain threshold: 819  
All-Ireland threshold: 40\*

GB max: 76,945 Dec  
NI max: 0

Greylag Geese breeding in Iceland winter almost exclusively in northern Britain, apart from small numbers in Ireland, Norway, the Faeroes and Iceland. The peak number recorded by the Icelandic-breeding Goose Census (IGC) during 2005/06 was 94,359 over the weekend of 5th-6th November. This total was adjusted (by taking into account missing sites and potential overlap with birds assumed

not to be of Icelandic origin) to give a population estimate of 95,938 birds, a 10.5% decline on the equivalent estimate for the autumn of 2004. Despite this decline, however, this was still the second-highest total to date. The total number of birds assumed to refer to the Icelandic population actually counted at British sites (without adjustment for non-

\*50 is normally used as a minimum threshold

counted sites) was 76,490 birds in November 2005.

Relatively few birds had arrived by the time of an IGC census in early October, with most birds making an appearance over the course of the following month. By the November census, about two-thirds of birds were found in northern Scotland (especially Orkney). For the first time, the IGC trialled a third coordinated count, this time in early December when 76,945 were counted in Britain. The purpose of this extra count, which will be further trialled over two subsequent winters, is to ascertain whether birds remaining later into the autumn in Iceland are having a major impact on the census and whether December is now a better month in which to conduct a coordinated census.

Counts in Orkney remained high, with West Mainland the key area, supporting about 40% of the total for the islands. Other sites with relatively high counts included Loch Eye/Cromarty Firth, Loch Fleet, Loch Ussie

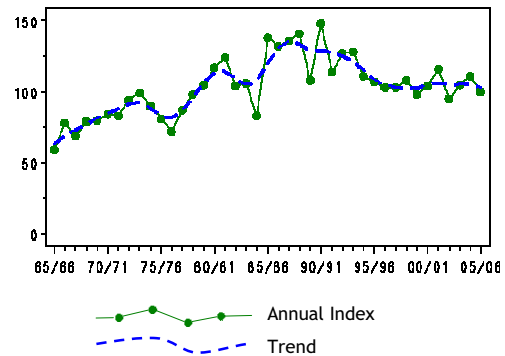


Figure 9.a, Annual indices & trend for Icelandic Population for GB.

and the Forth Estuary, whilst counts at Loch Ken and the Dornoch Firth were lower than usual. Assessment of breeding success revealed an overall proportion of 22.7% young, higher than average although the mean brood size, at 2.3 young per successful pair, was a little lower than the recent five-year mean.

	01/02	02/03	03/04	04/05	05/06	Mon	Mean
<b>Sites of international importance in the UK</b>							
Orkney	22,665 <sup>13</sup>	26,505 <sup>13</sup>	43,097 <sup>13</sup>	42,697 <sup>13</sup>	40,403 <sup>13</sup>	Dec	35,073
Loch Eye and Cromarty Firth	5,680 <sup>13</sup>	(7,028) <sup>13</sup>	6,523 <sup>13</sup>	8,313 <sup>13</sup>	13,269	Dec	8,446
Caithness Lochs	(7,854)	2,792 <sup>13</sup>	2,971 <sup>13</sup>	11,755 <sup>13</sup>	8,727 <sup>13</sup>	Nov	6,820
Loch of Skene	2,100 <sup>13</sup>	(1,021) <sup>13</sup>	(2,600) <sup>13</sup>	4,500 <sup>13</sup>	4,700 <sup>13</sup>	Nov	3,767
Easterton - Fort George					3,500 <sup>13</sup>	Dec	3,500 ▲
Loch Spynie	5,300 <sup>13</sup>	3,200 <sup>13</sup>	2,200 <sup>13</sup>	1,000 <sup>13</sup>	2,600 <sup>13</sup>	Nov	2,860
Dornoch Firth	2,386 <sup>13</sup>	2,916	2,259	1,720	1,632 <sup>13</sup>	Nov	2,183
Tay and Isla Valley	2,092 <sup>13</sup>	(1,700)	2,425 <sup>13</sup>	1,930	2,155	Dec	2,151
Loch Fleet Complex	4,210 <sup>13</sup>	817 <sup>13</sup>	905 <sup>13</sup>	990 <sup>13</sup>	3,000	Oct	1,984
Bute	2,300 <sup>13</sup>	1,380 <sup>13</sup>	2,000 <sup>13</sup>	1,780 <sup>13</sup>	2,110 <sup>13</sup>	Dec	1,914
Lochs Davan and Kinord	5,277 <sup>13</sup>	2,700 <sup>13</sup>	920 <sup>13</sup>	135	105	Apr	1,827
Loch Garten	2,800 <sup>13</sup>	1,000 <sup>13</sup>	1,000 <sup>13</sup>	2,100 <sup>13</sup>	1,700 <sup>13</sup>	Oct	1,720
Munlochy Bay	3,500 <sup>13</sup>	3,130 <sup>13</sup>	110 <sup>13</sup>	20 <sup>13</sup>	1,000 <sup>13</sup>	Dec	1,552
Kilconquhar Loch	1,380 <sup>13</sup>	1,552	1,620	1,200 <sup>13</sup>	1,500 <sup>13</sup>	Nov	1,450
Forth Estuary	826	1,564	792	802	2,105	Mar	1,218 ▲
East Mains Flood				1,131 <sup>13</sup>			1,131
Inner Firth of Tay	1,900 <sup>13</sup>		754 <sup>13</sup>	842 <sup>13</sup>	850 <sup>13</sup>	Dec	1,087
Strathearn (West)		1,050 <sup>13</sup>	1,050 <sup>13</sup>				1,050
Loch Ken	(1,368)	(1,106)	(1,280)	1,023	380 <sup>13</sup>	Oct	1,031
Beaully Firth	840 <sup>13</sup>	2,010 <sup>13</sup>	280 <sup>13</sup>	600 <sup>13</sup>	1,380 <sup>13</sup>	Nov	1,022
Lower Teviot Valley	(598)	(1,800)	525	(833)	1,250	Nov	896
<b>Sites of national importance in Great Britain</b>							
Findhorn Bay	1,950 <sup>13</sup>		190 <sup>13</sup>	1,100 <sup>13</sup>	200 <sup>13</sup>	Nov	860 ▼
Cochrage Loch	850 <sup>13</sup>						850
Haddo House Lakes	980	975	1,100 <sup>13</sup>	603	520	Nov	836 ▼
Loch of Strathbeg	1,744 <sup>13</sup>	415 <sup>13</sup>	295 <sup>13</sup>	801 <sup>13</sup>	(853) <sup>13</sup>	Dec	822
<b>Sites no longer meeting table qualifying levels in WeBS-Year 2005/2006</b>							
Gadloch	685	994	650	650	1,020 <sup>13</sup>	Oct	800
Caistron Quarry	1,100	1,000	800	513	660	Feb	815
Whitrig Bog		1,000 <sup>13</sup>		850	450	Mar	767
Upper Tay	1,022 <sup>13</sup>	943 <sup>13</sup>	1,197 <sup>13</sup>	181 <sup>13</sup>	385 <sup>13</sup>	Nov	746
Marlee Loch				880 <sup>13</sup>	160 <sup>13</sup>	Oct	520
<b>Other sites surpassing table qualifying levels in WeBS-Year 2005/2006 in Great Britain</b>							
Loch Ussie	520 <sup>13</sup>	2	261	0	3,280 <sup>13</sup>	Nov	813
River Devon - Tullibody Bridge	160	175	658	223	1,270	Feb	497

	01/02	02/03	03/04	04/05	05/06	Mon	Mean
Shetland Isles		259 <sup>13</sup>		586 <sup>13</sup>	1,126 <sup>13</sup>	Oct	657
Island of Rousay				165 <sup>13</sup>	1,024 <sup>13</sup>	Nov	595
Gadloch	685	994	650	650	1,020 <sup>13</sup>	Oct	800
Isle of Cumbrae				500 <sup>13</sup>	1,000 <sup>13</sup>	Nov	750
Tynninghame Estuary	160 <sup>13</sup>	830	80	210	870	Mar	430
Monk Myre	0	0	0	200	850 <sup>13</sup>	Nov	210

## Northwest Scottish Population

International threshold: 100  
Great Britain threshold: 90

GB max: 9,530 Aug  
NI max: 0

Greylag Geese breeding in the Hebrides and adjacent coastal areas of northwest Scotland are a remnant of the native population of this species, which once bred across much of the UK. Although once extirpated throughout the remainder of the range, the species has become re-established in many areas and is now spreading northwards towards the range of the native breeders. As a result, it is becoming increasingly difficult to separate the two groups with confidence. A full survey of Greylag Geese in Scotland is planned for summer 2008, which should help to address this issue.

The most important areas for the presumed native breeders are censused at the end of the breeding season each August, with counts repeated in many of these areas each February.

The August total of 9,530 birds this year was a considerable increase on that of August 2004 and, moreover, surveyors considered that the Uists total of 4,642 birds was probably an undercount due to poor weather conditions at the time; this opinion is backed up by the fact that a higher total of 4,689 birds were counted on the Uists in February 2006, despite overwinter mortality. The February 2006 Uists total was 17% higher than the equivalent count in February 2005. On Tiree, counts were made throughout the winter and revealed numbers to be similar to those of the last few years. Breeding success on Tiree appeared to be very low in summer 2005, with the proportion of 18.8% young well below that of the previous year and the mean brood size of 2.0 the lowest on record.

	01/02	02/03	03/04	04/05	05/06	Mon	Mean
<b>Sites of international importance in the UK</b>							
Tiree	3,674 <sup>36</sup>	3,516 <sup>36</sup>	3,563 <sup>36</sup>	4,005 <sup>36</sup>	3,892 <sup>36</sup>	Jan	3,730
North Uist	2,076 <sup>17</sup>	2,261 <sup>17</sup>	2,642 <sup>17</sup>	2,970 <sup>51</sup>	2,671 <sup>51</sup>	Aug	2,524
South Uist	2,303 <sup>17</sup>	2,095 <sup>17</sup>	2,102 <sup>17</sup>	2,111 <sup>51</sup>	2,119 <sup>51</sup>	Feb	2,146
Isle of Coll		675 <sup>16</sup>	740	960	980 <sup>58</sup>	Mar	839
Benbecula	376 <sup>17</sup>	488 <sup>17</sup>	319 <sup>17</sup>	414 <sup>51</sup>	473 <sup>51</sup>	Feb	414
Machrihanish					272 <sup>58</sup>	Dec	272 ▲
Moine Mhor and Add Estuary					254 <sup>58</sup>	Mar	254 ▲
Loch Gorm				4	420	Oct	212 ▲
Melbost / Tong / Broad Bay	197		(4)	(86)	137	Jul	167
Tayinloan					141 <sup>58</sup>	Dec	141 ▲
Loch Gruinart Floods		0	3	21	509	Aug	133 ▲
Kentra Moss & Lower Loch Shiel	90	93	102	136	107	Sep	106
Branahuaie Saltings	101						101
<b>Sites no longer meeting table qualifying levels in WeBS-Year 2005/2006</b>							
Loch Broom					7	Feb	7
Isle of Colonsay			116 <sup>6</sup>		0 <sup>58</sup>		58
Loch Urrahag	(27)			31			31

## Re-established Population

Naturalised re-establishment<sup>†</sup>

GB max: 27,971 Dec  
NI max: 2,235 Mar

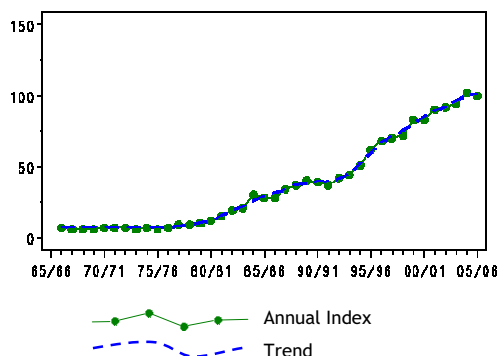


Figure 10.a, Annual indices & trend for Re-established Population for GB.

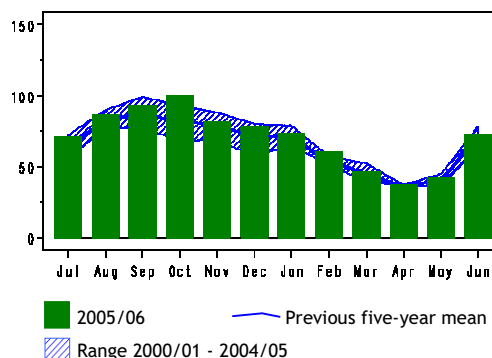


Figure 10.b, Monthly indices for Re-established Population for GB.

Although the British index fell slightly for the first time 1991/92, the maximum count in December was the highest on record. The Northern Ireland peak count was also higher than for 2004/05 though remained around average. Thirty-two sites in Britain have mean peaks in excess of 500 birds, two more than in 2004/05, whilst a further eleven sites surpassed this level during the current WeBS year. The biggest increases were at the Swale Estuary and Hornsea Mere which both held four figure counts for the first time, whilst counts at Tophill Low Reservoirs and Lower Derwent Ings were also the highest recorded there

during WeBS counts. Conversely, the peak counts at both Breydon Water and Nosterfield Gravel Pits were at their lowest since 2001/02.

In Northern Ireland, the peak count at Lough Foyle was slightly lower than that of 2004/05 although still well above the average, whilst counts from other sites in the province were about average for the five-year period. The overlap between re-established and Icelandic Greylag Geese in both Northern Ireland and Scotland remains difficult to assess, with forthcoming surveys planned to help resolve some of these issues.

	01/02	02/03	03/04	04/05	05/06	Mon	Mean
<b>Sites with mean peak counts of 500 or more birds in Great Britain<sup>†</sup></b>							
Nosterfield Gravel Pits	1,084	1,746	(1,338)	2,215	1,663	Sep	1,677
North Norfolk Coast	1,850	1,657	(1,767)	1,371	(1,435)	Sep	1,661
Lower Derwent Ings	807	1,219	1,047	927	1,401	Jan	1,080
Tophill Low Reservoirs	1,183	828	683	867	1,400	Oct	992
The Wash	967	895	1,011	1,038	1,005	Nov	983
Eccup Reservoir	760	1,000	1,084	750	546	Dec	828
Baston and Langtoft Gravel Pits	(330)	(600)	(803)				(803)
Sutton and Lound Gravel Pits	1,057	1,176	407	950	424	Apr	803
Swale Estuary	830	760	718	625	1,062	Oct	799
Bolton-on-Swale Gravel Pits	699	1,060	710	729	774	Sep	794
Kirkby-on-Bain Gravel Pits	635	900	1,072	925	387	Oct	784
Morecambe Bay	867	741	629	786	881	Nov	781
Ouse Washes	958	691 <sup>12</sup>	883 <sup>12</sup>	782	574	Oct	778
Humber Estuary	648	1,053	(769)	821	525	Aug	763
Hornsea Mere	745	465	642	785	1,145	Jun	756
Livermere	490	806	280	1,176	879	Feb	726
Abberton Reservoir	(2,500)	80	77	278	665	Oct	720
Tattershall Pits	400	730	1,015	445	950	Jan	708
Breydon Wtr & Berney Marshes	340	723	720	1,148	491	Nov	684
Hickling Broad	412	28	1,106	831	909	Sep	657

	01/02	02/03	03/04	04/05	05/06	Mon	Mean
Lavan Sands	609	1,037	623	406	560	Sep	647
Orwell Estuary	604 <sup>10</sup>	587 <sup>10</sup>	677 <sup>10</sup>	(543)	(618)	Dec	623
Llyn Traffwll	700	769	891	341	395	Sep	619
Dungeness Gravel Pits	554	(502)	667	529	676	Aug	607
Martham Broad		925	750	215	500	Dec	598
Thames Estuary	(329)	(378)	(456)	593	(400)	Nov	593
Medway Estuary	(311)	(135)	(146)	589 <sup>10</sup>	(122)	Oct	589
Little Paxton Gravel Pits	467	746	652	518	511	Sep	579
WWT Martin Mere	438	580	600	620	530	Oct	554
Besthorpe & Girton GPs & Fleet	(236)	(4)	(331)	(539)	(388)	Jan	(539)
Alton Water	490	577	571	419	612	Feb	534
Hardley Flood		515	487	515			506
<b>Sites with mean peak counts of 50 or more birds in Northern Ireland<sup>†</sup></b>							
Loughs Neagh and Beg	915	1,179	1,270	1,005	(630)	Feb	1,092
Lough Foyle	786	1,207	518	1,291	1,129	Mar	986
Strangford Lough	405	577	373	307	355	Mar	403
Belfast Lough	188	144	132	125	137	Nov	145
Lower Lough Erne		(71)	(54)	137	(140)	Jan	139
Ballysaggart Lough		70	66				68
<b>Other sites surpassing table qualifying levels in WeBS-Year 2005/2006 in Great Britain<sup>†</sup></b>							
Hagnaby Fen Restoration		17	160	5	(1,004)	Sep	297
North Cave Wetlands	369	102	232	244	850	Oct	359
River Cam - Kingfishers Bridge	300	223	(193)	(248)	800	Dec	441
Llyn Alaw	275	538	557	273	765	Sep	482
Seaton Gravel Pits and River	240	185	365	110	683	Dec	317
Lackford GPs	362	151	903	249	583	Jan	450
Dee Flood Meadows	480	540	480	350	577	Nov	485
Grimsthorpe Lake	425	350	272	405	535	Sep	397
Point of Ayre Gravel Pit	140	185	402	550	530	Aug	361
Nunnery Lakes	170	208	390	329	515	Nov	322
Scaling Dam Reservoir	280	315	377	405	503	Jun	376
<b>Other sites surpassing table qualifying levels in WeBS-Year 2005/2006 in Northern Ireland<sup>†</sup></b>							
Upper Quoile River	36	0	17	0	74	Mar	25
Upper Lough Erne	41	18	(15)	52	62	Feb	43

<sup>†</sup> as no British or All-Ireland thresholds have been set qualifying levels of 500 and 50 have been chosen to select sites, in Great Britain and Northern Ireland respectively, for presentation in this report

## Bar-headed Goose

*Anser indicus*

Escape  
Native Range: S Asia

GB max: 18 Sep  
NI max: 0

The national maximum was slightly down on the previous year despite birds being reported from 11 more sites; 44 in total. The highest counts were of five at both Chichester Harbour in September and Spade Oak Gravel Pit (Little

Marlow) in June. Kilmardinny Loch was the only site at which the species was recorded year-round. As usual, no birds were recorded in Northern Ireland.

## Snow Goose

*Anser caerulescens*

Vagrant and escape  
Native Range: N America

GB max: 58 Sep  
NI max: 0

Snow Geese were recorded in every month during 2005/06. The maximum count was higher than for 2004/05 though the number of sites at which Snow Geese were recorded decreased slightly to 25. Away from the resident flock on the Isle of Coll, the highest site total again came from the Lower Windrush Valley, where 14 were recorded, whilst at

Blenheim Park Lake, the maximum count decreased slightly on 2004/05 to 12 in June. Whilst most of the records doubtless refer to birds escaped from captivity, one at Loch of Strathbeg in September accompanying the large flock of Pink-footed Geese was probably a wild bird.

## Ross's Goose

*Anser rossii*

Escape and possible vagrant  
Native Range: N America

GB max: 2 Aug  
NI max: 0

Up to four Ross's Geese were reported between July and September, with singles (perhaps the same bird) at Norton Marsh and Stiffkey Fen on the North Norfolk Coast in July and September respectively, plus two at Tynninghame Estuary in August. Both of these

sites have hosted this species previously. There are several records from the North Norfolk Coast, the last being in June 2004, while the only previous record at Tynninghame Estuary was in August 2004.

## Emperor Goose

*Anser canagicus*

Escape  
Native Range: Alaska, NE Siberia

GB max: 23 Feb  
NI max: 0

Emperor Goose was recorded from just two sites. The usual flock at South Walney Island in Morecambe Bay peaked at 23 in February. The lowest count at this site was of nine in

May. The only other report of this species was of a single bird at Lackford Lakes in October and January.

## Greater Canada Goose

*Branta canadensis*

Naturalised introduction<sup>†</sup>  
Native Range: N America

GB max: 54,210 Dec  
NI max: 968 Jan

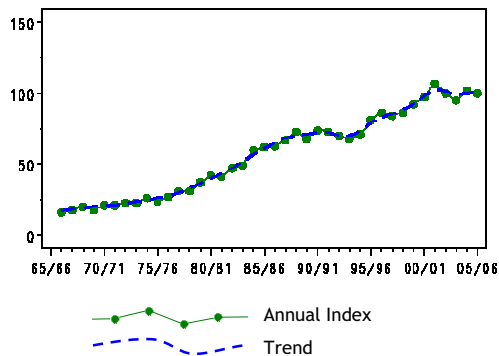


Figure 11.a, Annual indices & trend for Greater Canada Goose for GB.

During the past five years the British index has shown signs of stabilising following a long-term increase since the late 1960s. Throughout the year, the monthly indices reveal that numbers were extremely similar to average, as would be expected for a resident species, which is stable in numbers. However, the maximum counted total for Northern Ireland sites increased by about 50% over the previous year, with particularly significant increases at Upper and Lower Lough Erne, although the species is still absent from Loughs Neagh & Beg.

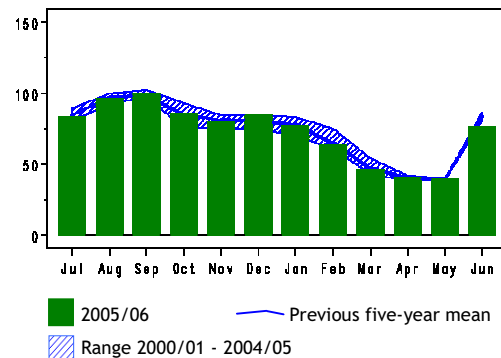


Figure 11.b, Monthly indices for Greater Canada Goose for GB.

Despite the national picture of stability in Britain, there is considerable between-year variation in peak counts at individual sites. The highest single-site total in 2005/06 was at the Dyfi Estuary, this being the second highest ever recorded at a single site for WeBS. Numbers at the Dyfi Estuary have peaked at over 2,000 every year during the past five years and it is now the principal site for this species. Numbers at the Mersey Estuary have increased over the past five years, and are now at an all-time high. The September count at Rostherne Mere was exceptionally high and

presumably represented a local concentration of birds more usually dispersed over several sites in the area. Conversely, there were some

particularly low counts from Tring Reservoirs, Fairburn Ings and Walthamstow Reservoirs.

	01/02	02/03	03/04	04/05	05/06	Mon	Mean
<b>Sites with mean peak counts of 600 or more birds in Great Britain†</b>							
Dyfi Estuary	2,156 <sup>10</sup>	3,029	2,437	2,380	2,947	Dec	2,590
Dee Estuary (England & Wales)	(2,268)	(2,568)	1,529	2,316	1,987	Jan	2,134
Mersey Estuary	737	1,437	1,177	2,088	2,188	Jul	1,525
Colliford Reservoir	894	1,884	1,284	1,477	841	Jun	1,276
Arun Valley	1,550	(1,754)	860	1,235	742	Nov	1,228
Rutland Water	1,120	1,276	1,369	1,244	1,070	Oct	1,216
Taw-Torridge Estuary	(888)	1,179	526	(912)	(1,109)	Dec	923
Ellesmere Lakes	906	751	812	1,348	668	Sep	897
Alde Complex	510 <sup>10</sup>	(514)	(896)	1,246	780	Feb	858
Tring Reservoirs	893	962	560	1,550	308	Sep	855
Bewl Water	500	885	960	986	900	Aug	846
Abberton Reservoir	(2,000)	270	639	(616)	607	Oct	826
Southampton Water	(1,084)	609	777	(548)	(674)	Oct	823
Stour Estuary	713	983	1,135	601	622	Jan	811
Doxey Marshes SSSI	638	(637)	881	893	(601)	Dec	804
Chew Valley Lake	810	830	785	810	650	Jul	777
Harewood Lake	700	700	686	870	888	Jan	769
Cleddau Estuary	1,000	765	655	622	585 <sup>10</sup>	Jan	725
College Lake Reserve	476	444	773	919	973	Oct	717
Pitsford Reservoir	722	967	727	441	682	Aug	708
Somerset Levels	399	1,378	555	432	778	Dec	708
Fairburn Ings	709	823	893		381	Jan	702
Walthamstow Reservoirs	662	945	837	784	278	Dec	701
Lee Valley Gravel Pits	955	678	699	577	564	Sep	695
King's Bromley Gravel Pits	669	712	776	721	586	Jul	693
Thames Estuary	598	(706)	(329)	786	672	Sep	691
Arlington Reservoir	823	523	703	750	642	Sep	688
Medway Estuary	(229)	(150)	(234)	365 <sup>10</sup>	935 <sup>10</sup>	Nov	650
Llangorse Lake	600	700	415	936	537	Dec	638
Humber Estuary	425	(456)	525	868	729	Sep	637
Watermead Country Park South	574	610	632	723	608	Jul	629
Carsington Water	511	848	680	500	490	Sep	606
Roadford Reservoir	507	501	611	763	650	Sep	606
Exe Estuary	445	510	617	772	680	Nov	605
<b>Sites with mean peak counts of 50 or more birds in Northern Ireland†</b>							
Lower Lough Erne		(110)	(343)	217	532	Jan	375
Upper Lough Erne	347	293	263	384	484	Feb	354
Strangford Lough	238	323	307	229	260 <sup>10</sup>	Dec	271
Lough McNea Lower				40	147	Jan	94
<b>Other sites surpassing table qualifying levels in WeBS-Year 2005/2006 in Great Britain†</b>							
Rostherne Mere	31	71	227	81	2,328	Sep	548
Eccup Reservoir	220	300	478	90	969	Jan	411
Dolydd Hafren	(500)	308	(500)	(500)	(800)	Jan	522
Royd Moor Reservoir				23	750	Feb	387
Hallington Reservoir	468	683	287	663	748	Sep	570
Lower Derwent Ings	564	642	594	429	712	Dec	588
Stanford Reservoir	433	357	336	454	705	Jul	457
Tamar Lakes	743		400	45	675	Sep	466
Teifi Estuary	193	380	300	294	671	Dec	368
River Trent: Stoke Lk/Radcliff viaduct	62	26	255	84	652	Sep	216
Ingbirchworth Reservoir				0	650	Mar	325
Hornsea Mere	89	285	184	510	640	Jun	342
Withington Hall Pool	67	520	620	540	635	Nov	476
Ribble Estuary	324	443	(493)	552	626	Jan	488
Bar Mere	13	480	400	473	600	Jan	393

† as no British or All-Ireland thresholds have been set qualifying levels of 600 and 50 have been chosen to select sites, in Great Britain and Northern Ireland respectively, for presentation in this report

## Lesser Canada Goose

*Branta hutchinsii*

Vagrant and escape  
Native Range: N America

GB max: 1 Oct  
NI max: 0

This is only the second year that Lesser Canada Goose has featured as a full species following the recent taxonomic review in 2005 (Sangster *et al.* 2005). The only record of

Lesser Canada Goose was of a single bird at King's Bromley Gravel Pits in October and was presumably an escape.

## Hawaiian Goose

*Branta sandvicensis*

Escape  
Native Range: Hawaii

GB max: 1 Jan  
NI max: 0

A single Hawaiian Goose was at Leisure Lakes, Lancashire in January. This was a new WeBS species for this site, the only other

records have been of singles at Harewood Lake in 2003/04 and Lower Derwent Ings in 1996/97.

## Barnacle Goose

*Branta leucopsis*

### Greenland Population

International threshold: 560  
Great Britain threshold: 450  
All-Ireland threshold: 75

GB max: 56,383 Mar  
NI max: 0

Barnacle Geese breeding along the east coast of Greenland winter exclusively in northwest Scotland and Ireland. Due to the dispersed nature of the winter population, a full census is carried out every five years (the next due in spring 2008). However, many of the main resorts are surveyed every year, largely by SNH and the Uists Greylag Goose Management Committee. Such counts showed that numbers in Argyll and on the Uists continue to increase, whilst those on Orkney (at South Walls) were more stable. The key site remains Islay, with the spring count of 47,303 by far the highest ever recorded for the island. There were also notably high counts on Coll and Tiree. On North Uist, coordinated

counts in February revealed a total of 4,659 birds (with 1,327 on Berneray alone), over 60% higher than equivalent counts the previous year. At the Dyfi Estuary in west Wales, the regular wintering flock of birds assumed to be from this population peaked at 165 birds, a slight rise on the low number present in 2004/05. The breeding success of Greenland Barnacle Geese was assessed at Islay and Tiree in November 2005, with an average of 6.6% young and a mean brood size of 1.75 young per successful pair. This represented a poor breeding season, perhaps linked to low rodent abundance (as shown in [www.arcticbirds.ru](http://www.arcticbirds.ru)) in its Arctic breeding areas leading to high levels of predation.

	01/02	02/03	03/04	04/05	05/06	Mon	Mean
<b>Sites of international importance in the UK</b>							
Island of Islay	35,213 <sup>16</sup>	36,478 <sup>37</sup>	40,018 <sup>6</sup>	44,186 <sup>6</sup>	47,303 <sup>58</sup>	Mar	40,640
North Uist	3,326 <sup>17</sup>	2,732 <sup>17</sup>		2,836 <sup>51</sup>	4,649 <sup>51</sup>	Feb	3,386
Tiree	2,132 <sup>36</sup>	2,786 <sup>36</sup>	2,796 <sup>36</sup>	3,273 <sup>36</sup>	3,474 <sup>36</sup>	Jan	2,892
South Walls (Hoy)	2,600 <sup>37</sup>	1,800 <sup>37</sup>			2,901 <sup>37</sup>	Mar	2,434
Isle of Coll	933 <sup>36</sup>	1,010 <sup>36</sup>	792 <sup>6</sup>	1,297	2,240 <sup>58</sup>	Mar	1,254
Balnakeil Bay			826 <sup>12</sup>		970	Feb	898
Colonsay/Oronsay		510 <sup>36</sup>	793 <sup>6</sup>	1,000 <sup>6</sup>			768
Sound of Harris (NW) (Harris)		706 <sup>35</sup>					706
North Sutherland		669 <sup>35</sup>					669
<b>Sites of national importance in Great Britain</b>							
Keills Peninsula & Isle of Danna	420 <sup>6</sup>	400 <sup>6</sup>	640 <sup>6</sup>	708 <sup>6</sup>	468 <sup>58</sup>	Dec	527
<b>Sites no longer meeting table qualifying levels in WeBS-Year 2005/2006</b>							
Rispond Bay				550	0		275

## Svalbard Population

International threshold: 270  
Great Britain threshold: 220

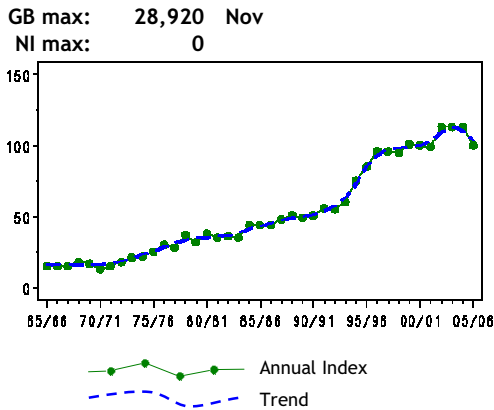


Figure 12.a, Annual indices & trend for Svalbard Population for GB.

The peak combined total for the Solway Firth, the wintering grounds for the vast majority of Svalbard-breeding Barnacle Geese, reached a new record high (albeit by only three birds!) However, this count was carried out over two consecutive dates and it is feared that some double-counting may have occurred. The “adopted population estimate” for the Solway was therefore calculated as 23,900 birds (taken as the average of the next highest count and all those within 10% of it). This represented a decrease of 11% (about 3000 birds) compared to the adopted population estimate of the previous year.

The first flock arrived on the Solway on 5th October 2006, but the main arrival was late, with many grounded in Norway, Shetland and at Loch of Strathbeg on their way. Most birds had arrived on the Solway by early November, however, and most remained until late April, with some into early May. WeBS Core Counts suggested that Rockcliffe Marsh was the most important area of the Solway throughout the winter, with other large flocks noted at Calvo Marsh, Herdhill Scar to Cardrunk and Anthorn-Newtown, as well as at Auchencairn Bay. Within the Solway flocks, the proportion of young birds was estimated as 7.9%, with 2.5 young per successful pair on average. The brood size estimate was the highest since 1980 but the percentage of young, whilst at its highest value since 2002, was still lower than the ten-year mean.

As usual, the only other sites supporting substantial numbers of Barnacle Geese assumed to be of this population were Loch of Strathbeg and Lindisfarne. At the former, a large flock was present for the October WeBS count and several hundred birds remained there throughout the winter. Conversely, at Lindisfarne there were flocks of 100 in September and 300 in December, but only very small numbers in other winter months.

	01/02	02/03	03/04	04/05	05/06	Mon	Mean
<b>Sites of international importance in the UK</b>							
Solway Firth	23,524 <sup>7</sup>	28,447 <sup>7</sup>	27,510 <sup>7</sup>	28,270 <sup>7</sup>	28,450 <sup>7</sup>	Nov	27,240
Loch of Strathbeg	10,390 <sup>36</sup>	276	190	1,100 <sup>36</sup>	4,336	Oct	3,258
Lindisfarne	(800)	(280)	1,572	320	600	Dec	831



Barnacle Geese (Rob Robinson)

## Naturalised Population

Naturalised establishment<sup>†</sup>

GB max: 958 Sep  
NI max: 251 Sep

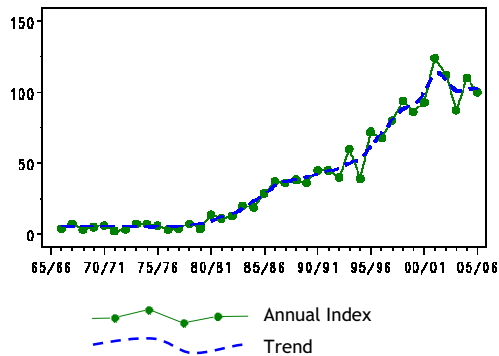


Figure 13.a, Annual indices & trend for Naturalised Population for GB.

The British index for naturalised Barnacle Goose has fluctuated in recent years and saw a slight drop from 2004/05, although numbers remain high. The peak count was the second highest maximum count recorded by WeBS, exceeded only by the record peak of 2004/05. The number of WeBS sites at which presumed naturalised Barnacle Geese were recorded rose to nearly 250 with the peak counts at Lound Waterworks, Derwent Water, Frampton Pools, Minsmere and Ullswater being the highest on record for these sites. Conversely, two sites formerly supporting high numbers - Hornsea

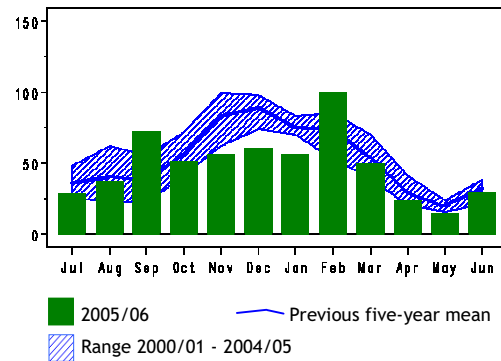


Figure 13.b, Monthly indices for Naturalised Population for GB.

Mere and Eversley Cross & Yateley Gravel Pits - have both seen a steady decline in numbers over the past five years. The peak count for Northern Ireland, coming in September, was comprised entirely of birds at Strangford Lough.

Counts of Barnacle Geese are assigned as naturalised birds purely on geographical location, and as a result, some extralimital birds from the Svalbard and Greenland populations may have been incorrectly assigned.

	01/02	02/03	03/04	04/05	05/06	Mon	Mean
<b>Sites with mean peak counts of 50 or more birds in Great Britain<sup>†</sup></b>							
Lound Waterworks					393	Jan	393
Willington	115	84	298				166
Roxton Gravel Pits	105	107	262	120	195	Aug	158
Eversley Cross & Yateley GPs	236	219	158	107	62	Dec	156
Duddon Estuary	(150)	(1)	(65)	(0)	(88)	Oct	(150)
Humber Estuary	(53)	(74)	80	(200)	88	Feb	123
Benacre Broad	42	120	250	130	52	Sep	119
Hornsea Mere	202	132	96	73	71	Sep	115
Middle Yare Marshes	141	104	72	82	74	Dec	95
Severn Estuary	73	96	(94)	101	111	Jan	95
Derwent Water	61	90	82	98	105	Jun	87
Frampton Pools	(75)	79	98	52	113	Mar	86
Minsmere	29	62	73	4	249	Sep	83
Ullswater	0	2	135	110	143	Feb	78
The Hen Reedbeds	(0)		(0)	(0)	(68)	Feb	(68)
Barcombe Mills Reservoir	76	64	73	52	47	Aug	62
<b>Sites with mean peak counts of 50 or more birds in Northern Ireland<sup>†</sup></b>							
Strangford Lough	214	223	232	248	251	Sep	234
<b>Other sites surpassing table qualifying levels in WeBS-Year 2005/2006 in Great Britain<sup>†</sup></b>							
Dungeness Gravel Pits	13	22	15	31	136	Feb	43
Osmaston & Shirley Park Lakes	2	2	1	23	53	Sep	16

<sup>†</sup> as no British or All-Ireland thresholds have been set a qualifying level of 50 has been chosen to select sites for presentation in this report

## Dark-bellied Brent Goose

*Branta bernicla bernicla*

GB max: 84,681 Feb

NI max: 0

International threshold: 2,000

Great Britain threshold: 981

All-Ireland threshold: +

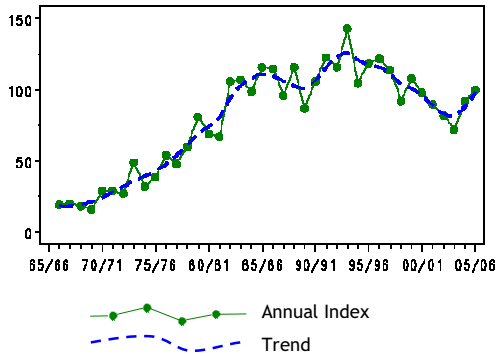


Figure 14.a, Annual indices & trend for Dark-bellied Brent Goose for GB.

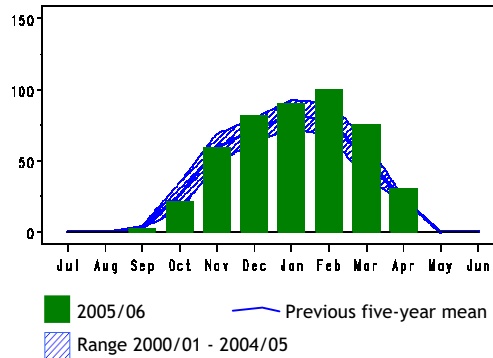


Figure 14.b, Monthly indices for Dark-bellied Brent Goose for GB.

The national maximum count of Dark-bellied Brent Geese was only slightly lower than during the previous year and typically for this species peak numbers were recorded during the latter half of the winter. During the ten years to 2003/04 the national index for Dark-bellied Brent Geese fell steadily by a third and dipped to a level akin to that of 1980/81. However, numbers have shown a revival over the past two years and in 2005/06 the index rose by around ten percent, following the excellent breeding season in 2005. Initial numbers, during the early part of the winter, were similar to average, but rose in December

and January and from February onwards were the highest of the past five years.

In the five-years to 2005/06 thirteen sites held internationally important numbers and a further thirteen sites held nationally important numbers. The majority of the key sites for this species are on the south and east coasts of England with only Burry Inlet elsewhere. The count at The Wash was the highest since December 1999, whilst numbers at Chichester and Langstone Harbours, and at Newtown Estuary on the Isle of Wight, were also higher than in recent years. The count at Lindisfarne was the highest ever at this site being over twice that of the previous peak.

	01/02	02/03	03/04	04/05	05/06	Mon	Mean
<b>Sites of international importance in the UK</b>							
The Wash	17,924	20,314	18,734	21,969	24,490	Feb	20,686
Thames Estuary	12,157	(8,908)	(6,741)	9,455	12,567	Oct	11,393
Chichester Harbour	7,470	7,358	8,290	7,436	9,018	Mar	7,914
North Norfolk Coast	8,033	9,180	5,722	6,607	8,831	Feb	7,675
Blackwater Estuary	(7,195)	6,100	4,892	7,178	5,946	Dec	6,262
Hamford Water	4,331	3,567	3,336	5,890	5,952	Jan	4,615
Langstone Harbour	4,813	4,686	1,765	5,069	5,496	Jan	4,366
Crouch-Roach Estuary	3,471	3,083	2,914	4,635 <sup>10</sup>	3,520	Mar	3,525
Portsmouth Harbour	(1,682)	(2,185)	(2,293)	(1,725)	2,925	Feb	2,925
Colne Estuary	2,572	(409)	(1,959)	(2,538)	(2,123)	Dec	2,572
Pagham Harbour	3,178	2,252	1,210	2,654	2,819	Jan	2,423
Humber Estuary	1,432	(2,351)	2,118 <sup>10</sup>	(2,667)	(2,636)	Feb	2,241
North West Solent	2,350	1,500	1,790	(2,208)	2,377	Feb	2,045 ▲
<b>Sites of national importance in Great Britain</b>							
Newtown Estuary	1,660	1,779	(1,235)	(1,444)	2,033	Dec	1,824
Dengie Flats	1,798	1,160	1,507	(1,538)	2,445	Dec	1,728
Stour Estuary	1,412	1,753	1,914	1,782	1,617	Apr	1,696
Deben Estuary	2,218	1,251	2,234	984	(1,449)	Feb	1,672
Swale Estuary	1,690 <sup>10</sup>	1,278	1,210	2,111	1,861	Jan	1,630

	01/02	02/03	03/04	04/05	05/06	Mon	Mean
Beaulieu Estuary	2,015	1,512	835	1,498	2,173	Feb	1,607
Fleet and Wey	2,188	398	1,337	2,625	1,436	Dec	1,597
Exe Estuary	1,183	1,714	1,368	1,645	1,531	Feb	1,488
Medway Estuary	(1,725)	(1,179)	836	1,834 <sup>10</sup>	(1,515)	Feb	1,478
Southampton Water	1,455	1,326	1,274	1,386	(783)	Mar	1,360
Orwell Estuary	1,215 <sup>10</sup>	1,525 <sup>10</sup>	1,396 <sup>10</sup>	976	1,477	Jan	1,318
Poole Harbour	(599)	(740)	(868)	(491)	1,160	Feb	1,160
Burry Inlet	1,174	917	(1,255)	811	1,121	Mar	1,056

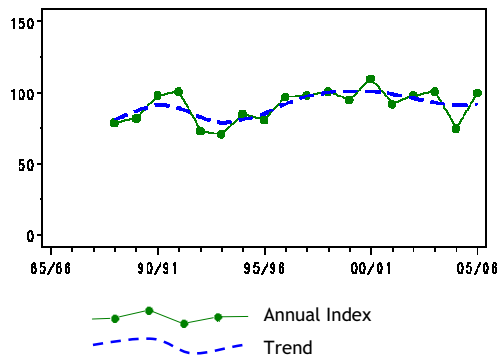
## Light-bellied Brent Goose

*Branta bernicla hrota*

### East Canadian High Arctic Population

International threshold: 260  
Great Britain threshold: +<sup>†</sup>  
All-Ireland threshold: 200

GB max: 151 Apr  
NI max: 23,047 Oct



	01/02	02/03	03/04	04/05	05/06	Mon	Mean
<b>Sites of international importance in the UK</b>							
Strangford Lough	19,583 <sup>32</sup>	17,520 <sup>32</sup>	21,500 <sup>32</sup>	26,250 <sup>32</sup>	21,885 <sup>32</sup>	Oct	21,348
Lough Foyle	1,841	1,563 <sup>32</sup>	3,277 <sup>32</sup>	1,603 <sup>32</sup>	3,968	Oct	2,450
Outer Ards Shoreline	210 <sup>32</sup>	700	642	762	618	Mar	586
Carlingford Lough	(259)	319	(570)	538	508	Mar	484
Killough Harbour	489 <sup>10</sup>	472	383	434	516	Mar	459
Dundrum Bay	320	242	188	302	640	Mar	338
<b>Sites of all-Ireland importance in Northern Ireland</b>							
Larne Lough	235	139	235	254	218	Feb	216
<b>Sites with mean peak counts of 25 or more birds in Great Britain†</b>							
Traeth Melynog			117	146			132
Jersey Shore	127						127
Loch Gruinart		2	0	284	76	Sep	91
Inland Sea, Beddmanarch & Alaw Est	80	76	95				84
Dee Estuary (England & Wales)	32 <sup>10</sup>	25	66	121	138	Mar	76
Foryd Bay	43	9	96	115	54	Apr	63
Loch Ryan	28 <sup>12</sup>	25 <sup>12</sup>	45	67	89	Dec	51
Derbyhaven Bay				39			39
Morecambe Bay	7	62 <sup>10</sup>	53	31	22	Dec	35
Guernsey Shore	(0)	19	(0)	(0)	35	Mar	27

† as no British threshold has been set a qualifying level of 25 has been chosen to select sites for presentation in this report

## Svalbard Population

International threshold: 70  
Great Britain threshold: 30\*

GB max: 3,756 Nov  
NI max: 0

\*50 is normally used as a minimum threshold

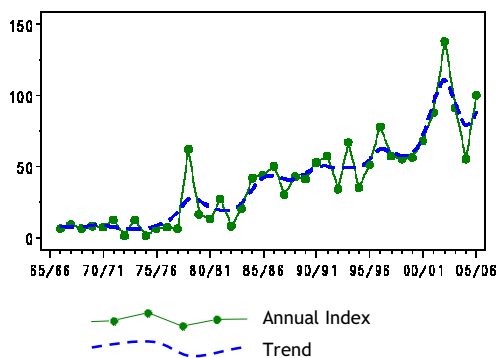


Figure 16.a, Annual indices & trend for Svalbard Population for GB.

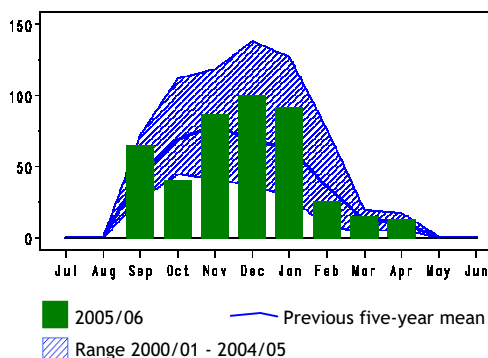


Figure 16.b, Monthly indices for Svalbard Population for GB.

The maximum count of 3,756 Svalbard-breeding Light-bellied Brent Geese in 2005/06 was almost twice that seen during the previous winter but approximately the same as in 2003/04. The general rise in the population size recorded over several decades, therefore, appears to be maintained. Monthly indices suggest that the principal arrival was in September, but numbers rose to peak around New Year. However most birds departed Britain between January and February, presumably to their spring staging grounds in Denmark, with only a few hundred remaining

into the spring. As ever, the vast majority of this population occurring in Britain winters at Lindisfarne. Geese at this site were aged on three occasions over the course of the 2005/06 winter. The proportion of young in the flocks was again low at 6.5%, with a mean brood size of 2.12 young per successful pair.

Away from Lindisfarne, Light-bellied Brent Geese found along the east coast are generally assumed to relate to this population, whereas west coast birds tend to be assigned to the East Canadian High Arctic population, although the division is somewhat artificial. During the

2005/06 winter, at sites away from Lindisfarne numbers peaked in February, presumably as part of the dispersal from the key site. The peak on the Moray Firth was the highest for three years, and five-year peak mean numbers

at Seahouses to Budle Point exceeded the threshold for national importance. The flock of 30 birds at St Andrews Bay in February was the first WeBS record at this site since January 1987.

	01/02	02/03	03/04	04/05	05/06	Mon	Mean
<b>Sites of international importance in the UK</b>							
Lindisfarne	(4,845)	(3,150)	3,716	2,505 <sup>10</sup>	3,688	Nov	3,689
<b>Sites of national importance in Great Britain</b>							
Inner Moray and Inverness Firth	41	100	55	18	81	Feb	59
Seahouses to Budle Point	70	0	(0)	23	48	Feb	35 ▲
<b>Other sites surpassing table qualifying levels in WeBS-Year 2005/2006 in Great Britain</b>							
St Andrews Bay	0	0	0	0	30	Feb	6

## Black Brant

*Branta bernicla nigricans*

Vagrant

Native Range: N America and E Asia

GB max: 4 Jan  
NI max: 0

Most records of Black Brant were from the Solent area, with records from Portsmouth, Langstone, Chichester and Pagham Harbours between November and March. Away from the south coast, single birds were at Holkham and

Burnham Overy Fresh Marshes (North Norfolk Coast) in January and Capel Fleet (Swale Estuary) in February, with two at Titchwell (North Norfolk Coast) in February.

## Red-breasted Goose

*Branta ruficollis*

Vagrant and escape

Native Range: SE Europe, Asia

GB max: 2 Jul  
NI max: 0

Red-breasted Geese were recorded at just three sites, all of these records likely to refer to escaped birds. A maximum of two were at Diss Mere between July and December.

Singles were also recorded at Clifford Hill Gravel Pits in November and The Hen Reedbeds in February.

## Egyptian Goose

*Alopochen aegyptiaca*

Naturalised introduction

Native Range: Africa

GB max: 384 Sep  
NI max: 0

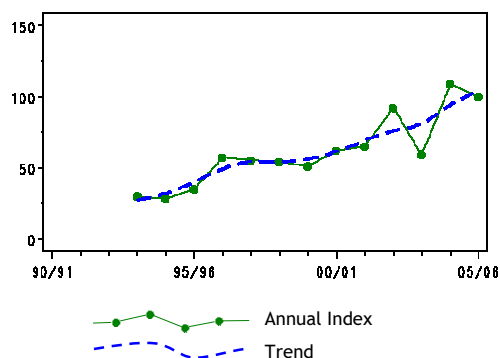


Figure 17.a, Annual indices & trend for Egyptian Goose for GB.

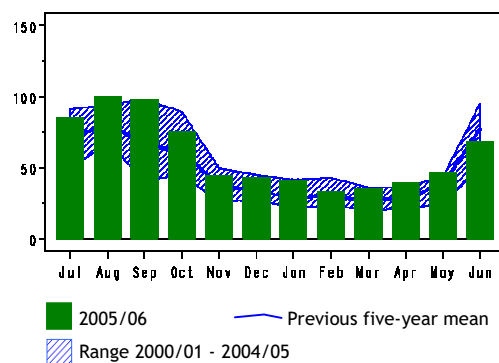


Figure 17.b, Monthly indices for Egyptian Goose for GB.

The British peak was somewhat lower than that of the previous year and this was reflected in the national index. Despite this slight fall, the underlying trend is one of increase, which has been the case since at least 1993/94. Egyptian Goose numbers were high throughout the year, particularly during autumn when numbers surpassed those of the previous five-year period.

East Anglia remains the most important area for this species with 14 out of the 17 key sites being in this region. Numbers at the

principal site, the North Norfolk Coast, were the same as the low figure of two years ago; however, these figures have been influenced by incomplete coverage of the key location – Holkham Lake - during the past three years. Numbers at Breydon Water have been increasing over recent years and in 2005/06 the WeBS total was the highest ever recorded at the site. Similarly, record site totals were also received from Eversley Cross and Yateley Gravel Pits, East Wretham Meres, Tundry Pond, Tattershall Pits and Thorpe Water Park.

	01/02	02/03	03/04	04/05	05/06	Mon	Mean
<b>Sites with mean peak counts of 10 or more birds in Great Britain†</b>							
North Norfolk Coast	318	233	(126)	(144)	(126)	Oct	276
Sennowe Park Lake Guist		98	85				92
Breydon Wtr & Berney Marshes	48	63	65	82	85	Aug	69
Rutland Water	60	58	70	46	53	Sep	57
St Benet's Levels	52	88	23				54
Middle Yare Marshes	45	72	24	(47)	(26)	Oct	47
Nunnery Lakes	19	21	51	36	31	Oct	32
Spade Oak GP (Little Marlow)	23	33	6	37	49	Sep	30
Weybread Pits	18	31	30	41			30
Cranwich Gravel Pits	19	34					27
Whitlingham Country Park	10	7	18	59	27	Jul	24
Trinity Broads	18	20	10	22			18
Hickling Broad	0	0	(0)	21	42	Oct	16
Lound Waterworks					16	Sep	16
Barton Broad	15	18	14	13	16	Aug	15
Ampton Water		2	25				14
Stanford Training Area	13						13
<b>Other sites surpassing table qualifying levels in WeBS-Year 2005/2006 in Great Britain†</b>							
Eversley Cross & Yateley GPs	0	2	9	6	24	Mar	8
East Wretham Meres	2	3	2	2	14	Aug	5
Tundry Pond	0	0	0	4	13	Sep	3
Tattershall Pits	3	4	7	10	11	Aug	7
Thorpe Water Park	(4)	(4)	4	4	11	Jan	6

† as no British or All-Ireland thresholds have been set a qualifying level of 10 has been chosen to select sites for presentation in this report

## Orinoco Goose

*Neochen jubata*

Escape  
Native Range: S America

GB max: 1 Oct  
NI max: 0

A single Orinoco Goose was recorded at Roath Park Lake in October and December. This was

the first time that this escaped species has been recorded by WeBS.

## Cape Shelduck

*Tadorna cana*

Escape  
Native Range: S Africa

GB max: 3 Oct  
NI max: 0

Cape Shelduck were reported at just two sites in 2005/06. Three were at Cley Marsh, North Norfolk Coast in October and a single bird was

at Crosslanes, Shropshire the following March. This species had not previously been recorded during WeBS at either of these sites.