



(a) ESF system

# Fat Scores

(b) BWG System

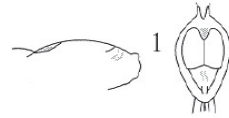
Score Description

Score Description

0 no visible fat.  
Dark red

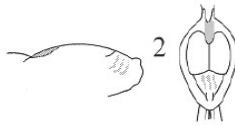
0 no visible fat.  
Dark red

1 F: wide wedge of fat.  
A: trace of fat.  
Light red



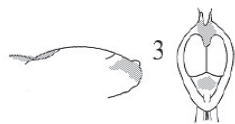
1 F: trace of fat. (~E0.5)  
Light red/pink

2 F: completely covered but  
deeply concave.  
A: slips of fat.  
Light yellow



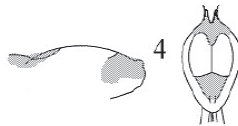
2 F: base of tracheal pit obscured by  
fat to about one third full. (~E1.0)  
Yellow-pink

3 F: moderate fat reserves  
cover ends of inter-clavicles  
but concave.  
A: flat or slightly bulging pad.  
Light yellow



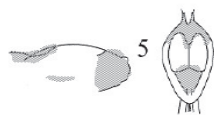
3 F: tracheal pit about two-thirds full.  
Muscle within tracheal pit visible  
between fat and clavicles. (E~1.5)  
Yellow-pink

4 F: filled up to far end of clavicles.  
A: covered by clearly bulging pad  
of fat.  
Yellow



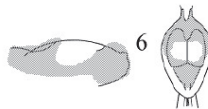
4 F: completely filled up to far end of  
clavicles but still concave  
(not bulging). (~E3.0)  
Pale yellow

5 F: convex bulge, perhaps  
overlapping breast muscles.  
A: extreme convex bulge.  
Yellow



5 As ESF

6 F and A: fat covering breast  
muscles by several mm.



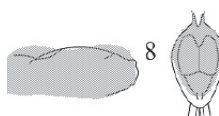
6 As ESF

7 F and A:  $\frac{3}{4}$  of breast muscles covered.  
Yellow



7 As ESF

8 F and A: breast muscles not visible.  
Yellow



8 As ESF

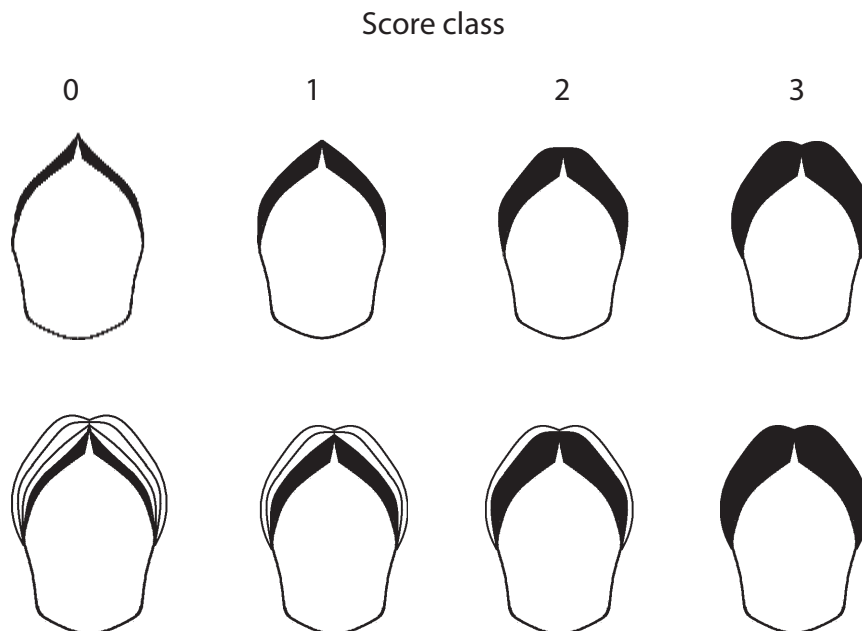
(F=Furcular region or tracheal pit; A=Abdomen)

Under the BWG scale, ESF scale equivalents are given (eg E0.5) eg a score of 3 on the BWG scale is equivalent to about 1.5 on the ESF scale.



## Pectoral muscle score

Score Class	<i>Prominence of sternum</i>	<i>Pectoral muscle shape</i>
0	Sternum sharp	Muscle depressed
1	Sternum easy to distinguish but not sharp	Muscle neither depressed, sharp nor rounded
2	Sternum still distinguishable	Muscle slightly rounded
3	Sternum difficult to distinguish	Muscle rounded (full)



The black areas are the muscles.

The white areas on the bottom row show the differences between scores.

### Pectoral muscle scores

After Bairlein (1995) redrawn, with permission from European-African Songbird Migration Network Manual of Field Methods.