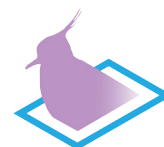


Habitat Guide - Breeding Waders of English Upland Farmland 2016



Please see the Habitat Recording Form and Concise Survey Instructions for details of habitats categories/types.

The following photographs provide examples to illustrate the different habitat types.

Grassland type:

- Improved
 - typically a uniform height sward and green in colour.
- Semi-improved
 - green in colour, often with areas of tussocks/rushes
- Rough grass
 - usually enclosed grazed land (not moorland) with an uneven, tussocky, rank green-brown sward; any grazing at low density.
- Hay Meadow
 - Tall uneven (or mown) sward with many wildflowers, light green in colour.
- Silage
 - Tall uniform thick (or mown) sward, with few, if any, wildflowers, dark green in colour.



Improved (foreground)



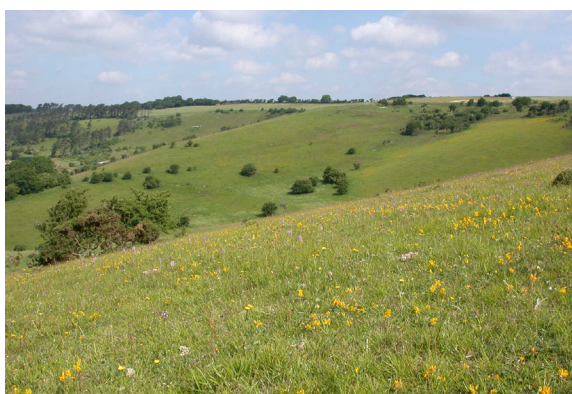
Semi-improved (foreground)



Rough grass



Rough grass



Hay Meadow



Silage (just mown)

Sward structure (grass only - excluding rushes/juncus):

- Uniform - nearly all the same height
- Tussocky - more than half short minority tall
- Patchy - more than half tall with minority short



Uniform



Patchy



Tussocky



Tussocky

Rush/Juncus:

Is a tall (30-90cm) green spikey plant, which typically grows in damp grassland. The stem is round and smooth with a springy inside.



Rush/Juncus



Rush/Juncus in semi-improved grassland

Crop types:

- Cereal
 - Winter/spring cereal - uniform in height/colour, typically bluish green, planted rows.
- Root / Other
 - including Maize, fodder crops, ploughed or emerging crop/re-seeded



Winter Cereal



Other - Grass ley (recently planted)



Root



Other - Cereal stubble

Other Habitat:

- Moorland
 - above the moorland line, typically unenclosed (containing heather moor, blanket bog, Molinia or other rough grassland).
- Other unsuitable
 - includes scrub, woodland, urban and other land uses.



Moorland (grass, heather & bracken)



Moorland (heather & grass)