

TOTAL NUMBERS

The total numbers of waterbirds recorded by WeBS in 2004/05 are given in Tables 3 and 4 for Great Britain (including the Isle of Man, but excluding the Channel Islands) and Northern Ireland, respectively. Counts of waterbirds in the Republic of Ireland by I-WeBS are provided in Table 5.

Site coverage for gulls and terns is given separately since recording of these species was optional.

Totals for April to June 2004 are given in Tables A3 and A4 in Appendix 3.

Introduced and escaped waterbirds

Many species of waterbird occur in the UK as a result of introductions, particularly through escapes from collections. Several have become established, such as Canada Goose and Ruddy Duck. The British Ornithologists' Union Records Committee recently established a category 'E' for 'species that have been recorded as introductions, transportees or escapes from captivity, and whose breeding populations (if any) are not thought to be self-sustaining' (BOURC 1999). WeBS records of these species are included in this report both for the sake of completeness and in order to assess their status and monitor any changes in numbers, a key requirement given the need, under the African-Eurasian Waterbird Agreement of the Bonn convention '... to prevent the unintentional release of such species...' and once introduced, the need '... to prevent these species from becoming a threat to indigenous species' (Holmes *et al.* 1998).

Numbers of established populations (*e.g.* Canada Goose and Ruddy Duck, which are placed in category 'C') are excluded from Figure 2 below since the large numbers involved would swamp numbers of other species. Additionally, species that occur in

both categories A and E (*e.g.* Pink-footed Goose) are also excluded since separation of escaped from wild birds is not readily possible using WeBS methods.

A total of 21 category E species were recorded in 2004/05 at 171 sites, both somewhat lower than the previous few years. The summed site maxima of 391 birds was the lowest during the past five years. As usual over half the total was attributable to Black Swan and Muscovy Duck, however, numbers of Bar-headed Goose were their lowest during the past five-years.

Although this figure will undoubtedly include some duplication of individual birds recorded at more than one site and occasional records of pinioned birds, this figure probably provides a truer reflection of the numbers of introduced or escaped waterbirds frequenting WeBS sites than the peak monthly total of 167 birds in November 2004.

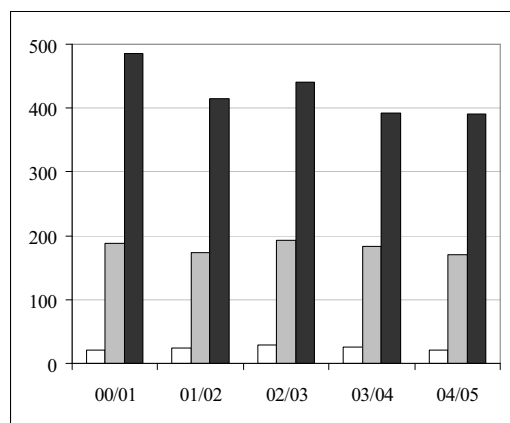


Figure 2. Number of species (white bars), number of sites at which birds were recorded (grey bars) and summed site maxima (black bars) for waterbirds in the BOURC's category E.

Table 3. Total numbers of waterbirds recorded by WeBS Core Counts in Great Britain in 2004/05. Census total are indicated by '*'.

	Species	Jul	Aug	Sep	Oct	Nov
	<i>Number of sites visited</i>	<i>752</i>	<i>800</i>	<i>1453</i>	<i>1589</i>	<i>1636</i>
MS	Mute Swan	10912	11686	17772	20585	20355
AS	Black Swan	30	41	40	42	41
AT	Black-necked Swan	0	0	0	4	0
BS	Bewick's Swan	0	0	2	148	2520
WS	Whooper Swan	25	20	62	2330	6250
HN	Chinese Goose	3	8	9	12	25
BE	Bean Goose	0	0	0	254	493
PG	Pink-footed Goose	24	26	10216	271934	251948
WG	White-fronted Goose	0	0	0	1	0
EW	European White-fronted Goose	2	0	9	41	214
NW	Greenland White-fronted Goose	0	2	1	289	579
LC	Lesser White-fronted Goose	1	0	1	0	0
JI	Icelandic Greylag Goose	0	0	0	35334	85582
JH	NW Scotland Greylag Goose	1548	*8516	1002	394	506
JE	Re-established Greylag Goose	12198	16476	28120	24346	25482
HD	Bar-headed Goose	8	4	20	15	14
SJ	Snow Goose	3	3	15	14	19
RJ	Ross's Goose	2	1	1	1	0
EM	Emperor Goose	6	8	21	21	19
CG	Greater Canada Goose	27707	33963	54324	56609	54379
ZE	Canada Goose x Bar-headed Goose	0	0	0	0	0
ZI	Canada Goose x domesticated Greylag	2	0	0	1	0
LQ	Lesser Canada Goose	0	0	0	1	1
YE	Naturalised Barnacle Goose	141	267	520	844	779
YN	Nearctic Barnacle Goose	5	5	4	72	*40572
YS	Svalbard Barnacle Goose	106	9	310	*24335	*21382
ZH	Barnacle Goose x Canada Goose	0	0	2	1	0
ZG	Barnacle Goose x Greylag Goose	0	0	0	0	0
BG	Brent Goose	0	0	1	0	0
DB	Dark-bellied Brent Goose	24	51	200	33896	62324
QN	Nearctic Light-bellied Brent Goose	0	0	423	46	184
QS	Svalbard Light-bellied Brent Goose	0	0	1576	1947	1830
BB	Black Brant	0	0	0	0	1
EB	Red-breasted Goose	2	2	2	0	3
ZL	Feral/hybrid Goose	156	175	680	749	681
ZM	Hybrid goose	0	0	0	1	1
EG	Egyptian Goose	272	183	442	387	159
UB	Paradise Shelduck	1	1	1	1	1
UE	Cape Shelduck	1	0	1	1	0
UD	Ruddy Shelduck	2	9	10	3	0
SU	Shelduck	32002	26513	41675	57071	50550
ZT	Hybrid shelduck	0	0	0	0	0
MY	Muscovy Duck	24	23	49	49	55
DC	Wood Duck	1	0	2	5	6
MN	Mandarin	195	158	293	373	293
WN	Wigeon	259	1814	43103	250074	346552
AW	American Wigeon	0	0	0	0	2
HL	Chiloe Wigeon	1	2	0	0	0
GA	Gadwall	1810	3846	9500	10325	12739
T.	Teal	1113	14075	69424	126637	117934
TA	Green-winged Teal	0	0	0	0	3
KQ	Speckled Teal	0	0	2	0	2
MA	Mallard	45027	64187	106190	124379	125101
ZF	Feral/hybrid mallard type	294	342	500	446	545
QB	Chestnut Teal	0	0	0	0	1
PT	Pintail	11	91	6186	20336	20930
PN	Bahama Pintail	0	0	1	0	0
GY	Garganey	5	37	53	10	0
TB	Blue-winged Teal	0	0	0	0	0

Table 3. continued

	Dec	Jan	Feb	Mar	Apr	May	Jun
<i>sites</i>	1664	1774	1728	1685	686	583	566
MS	20955	19708	17149	16469	7694	6494	7897
AS	37	39	26	39	28	39	22
AT	0	0	0	0	0	0	0
BS	5692	6673	4826	342	3	0	0
WS	8088	7889	7989	3993	405	23	15
HN	17	14	12	7	5	0	1
BE	549	424	438	35	3	0	1
PG	99982	104750	53852	46925	29957	2000	42
WG	13	0	0	0	0	0	0
EW	1176	1913	1983	528	1	0	0
NW	*14079	616	386	*14030	84	0	0
LC	0	0	0	0	0	0	0
JI	23950	20440	20710	19975	1618	0	0
JH	660	1164	*8498	1038	76	51	13
JE	23252	20320	16584	13067	5528	5358	9558
HD	5	12	9	7	6	6	6
SJ	33	22	32	34	17	7	14
RJ	0	0	1	1	0	0	0
EM	15	18	8	13	4	9	0
CG	53428	52549	42602	30709	11806	8446	21741
ZE	0	0	0	0	1	0	0
ZI	5	4	0	0	3	5	11
LQ	1	1	0	0	0	0	0
YE	763	724	521	334	151	67	127
YN	727	476	923	*48966	17	1	0
YS	*28356	*25876	*24852	*20169	16291	50	95
ZH	0	1	1	0	0	0	1
ZG	0	0	0	0	0	2	3
BG	2	0	0	0	0	0	0
DB	65282	85469	69271	53153	14960	9525	26
QN	316	81	147	84	0	0	0
QS	1989	1424	330	609	50	0	1
BB	2	2	3	2	0	0	0
EB	3	4	4	4	2	0	0
ZL	746	807	529	566	155	147	176
ZM	0	0	0	0	1	0	0
EG	154	145	132	107	87	114	192
UB	1	1	1	1	0	0	0
UE	0	0	0	0	0	0	0
UD	1	2	2	0	2	0	0
SU	49876	53776	44561	41442	19691	12444	17801
ZT	0	1	1	0	0	0	0
MY	57	70	57	46	29	27	19
DC	2	3	4	7	4	3	3
MN	271	298	306	275	90	64	34
WN	376743	359920	271479	213932	11354	451	222
AW	2	2	0	0	0	0	1
HL	0	0	0	0	0	0	1
GA	14649	15639	13137	9151	3512	1601	1811
T.	125808	151875	96640	65791	13764	442	719
TA	3	5	7	3	2	0	0
KQ	5	0	2	0	0	0	0
MA	140112	128387	84895	63639	24709	18326	26792
ZF	602	435	447	389	180	128	280
QB	0	0	0	0	0	0	1
PT	24042	24745	18333	9173	1104	62	8
PN	14	0	0	0	2	1	0
GY	0	1	0	0	41	15	3
TB	0	0	0	0	0	1	0

Table 3. continued

Species	Jul	Aug	Sep	Oct	Nov
<i>Number of sites visited</i>	752	800	1453	1589	1636
SV Shoveler	370	2581	8397	10785	9940
IE Ringed Teal	0	0	0	0	0
RQ Red-crested Pochard	13	24	152	175	135
PO Pochard	2418	5627	6704	18315	23116
AZ Redhead	0	0	0	1	1
NG Ring-necked Duck	1	1	1	1	4
NZ New Zealand Scaup	0	0	1	0	1
FD Ferruginous Duck	0	1	1	0	0
TU Tufted Duck	19808	28917	41308	56338	51997
SP Scaup	3	25	48	1062	344
AY Lesser Scaup	0	0	0	0	0
ZD Aythya hybrid	1	1	2	2	2
E. Eider	13544	15646	16026	13282	9948
KE King Eider	0	0	0	0	0
LN Long-tailed Duck	0	0	0	510	597
CX Common Scoter	3036	994	1773	7161	11640
DX Black Scoter	0	0	0	0	0
FS Surf Scoter	0	0	0	0	0
VS Velvet Scoter	107	266	159	640	1153
UX Unidentified scoter	0	0	0	0	0
VH Bufflehead	0	0	0	1	1
GN Goldeneye	96	158	205	2092	7568
SY Smew	1	0	0	1	11
RM Red-breasted Merganser	622	746	898	2634	3149
GD Goosander	897	700	769	1315	1692
RY Ruddy Duck	634	1193	2469	2922	3636
OI Argentine Bluebill	0	0	1	1	0
WQ White-headed Duck	0	0	1	1	0
RH Red-throated Diver	35	57	155	395	233
BV Black-throated Diver	2	2	4	9	22
ND Great Northern Diver	0	0	1	31	58
LG Little Grebe	1200	2389	4531	4882	4561
GG Great Crested Grebe	4356	6288	8495	9193	8712
RX Red-necked Grebe	7	24	30	11	7
SZ Slavonian Grebe	1	2	13	219	80
BN Black-necked Grebe	32	36	46	59	49
UV Unidentified grebe	0	0	0	0	0
CA Cormorant	7397	10071	16612	17535	17192
SA Shag	271	791	1223	2238	947
XU Unidentified Cormorant/Shag	1	0	14	7	13
BI Bittern	3	1	4	10	15
QH Squacco Heron	0	0	0	1	0
ET Little Egret	1149	2197	2780	2377	2031
HW Great White Egret	0	1	0	2	1
H. Grey Heron	2031	2453	3331	3767	3550
OR White Stork	2	4	2	0	2
IS Sacred Ibis	1	1	1	1	0
NB Spoonbill	4	2	2	3	12
NA African Spoonbill	0	0	0	1	1
WA Water Rail	39	63	94	273	509
AK Spotted Crane	0	2	2	0	0
MH Moorhen	4565	5884	10897	12409	13431
CO Coot	36754	55821	92795	105550	109032
AO American Coot	0	0	0	0	0
AN Crane	0	1	2	0	1
KF Kingfisher	146	186	375	443	456
TOTAL WILDFOWL	233470	318746	613089	1340867	1491790

Table 3. continued

	Dec	Jan	Feb	Mar	Apr	May	Jun
<i>sites</i>	1664	1774	1728	1685	686	583	566
SV	10442	11131	11141	10099	5170	625	375
IE	0	0	0	0	0	0	1
RQ	77	107	118	101	28	24	16
PO	27211	30553	23971	15298	1203	837	994
AZ	1	0	0	0	0	0	0
NG	6	8	4	4	2	0	0
NZ	0	0	0	0	0	0	0
FD	0	0	0	1	0	0	0
TU	54390	55151	49606	42890	16018	7250	7185
SP	7599	2446	1268	1213	113	45	8
AY	2	2	1	3	0	1	0
ZD	1	4	3	4	1	0	0
E.	18661	11603	12164	14544	9271	12242	8833
KE	1	1	0	1	0	0	0
LN	3586	3205	1322	693	165	322	0
CX	12197	3554	5907	3569	8841	5789	85
DX	0	0	0	1	0	0	0
FS	3	4	0	1	0	0	0
VS	2014	678	1117	1001	268	92	0
UX	0	2570	2500	0	0	0	0
VH	1	1	0	0	0	0	0
GN	11392	12946	12194	11031	1722	68	75
SY	127	170	146	84	3	1	0
RM	3232	3053	2530	3018	1416	382	435
GD	2650	2597	2429	2230	305	227	382
RY	3139	3856	3061	2511	993	507	404
OI	0	0	0	0	1	1	0
WQ	0	1	1	0	0	0	0
RH	345	210	188	303	108	68	6
BV	20	17	67	78	15	9	8
ND	59	77	138	82	17	12	0
LG	4125	3686	3099	3200	1090	694	671
GG	8660	7058	7304	7453	3131	2280	2264
RX	13	19	14	14	3	1	0
SZ	159	163	134	138	15	0	0
BN	80	51	51	52	40	32	30
UV	0	0	0	1	0	0	0
CA	16164	14555	13023	11991	5818	4029	3906
SA	1549	859	1229	435	231	99	104
XU	0	9	0	0	0	0	0
BI	26	16	18	11	6	3	0
QH	0	0	0	0	0	0	0
ET	1577	1397	1112	1162	772	551	692
HW	2	2	0	0	0	1	0
H.	3670	3329	3404	3172	1547	1251	1478
OR	3	2	2	2	0	0	0
IS	1	0	0	0	2	0	0
NB	4	9	7	9	10	9	7
NA	1	1	1	1	1	1	0
WA	502	359	316	341	96	35	41
AK	0	0	0	0	0	0	0
MH	13334	13464	11613	12223	4672	2711	2349
CO	106571	97403	69498	54318	19954	10538	18040
AO	1	0	0	0	0	0	0
AN	0	0	0	0	0	0	0
KF	355	285	219	248	68	56	66
	1365259	1360124	1020782	818566	246553	116702	136092

Table 3. continued

Species		Jul	Aug	Sep	Oct	Nov
<i>Number of sites visited</i>		752	800	1453	1589	1636
OC	Oystercatcher	51791	161966	185119	202112	214842
IT	Black-winged Stilt	1	1	1	1	1
AV	Avocet	2326	2417	2451	5379	4281
TN	Stone-curlew	0	1	0	0	0
LP	Little Ringed Plover	203	60	10	2	3
RP	Ringed Plover	1645	18317	12115	10527	7006
KP	Kentish Plover	0	0	0	0	0
DO	Dotterel	0	0	0	1	0
GP	Golden Plover	5471	40538	36383	104189	99299
GV	Grey Plover	850	12056	30474	42690	26789
L.	Lapwing	33981	71964	60760	140494	166446
KN	Knot	19031	104363	156262	209500	265938
SS	Sanderling	1501	11836	11215	9679	7490
LX	Little Stint	0	37	66	50	9
TK	Temminck's Stint	0	0	0	0	0
WU	White-rumped Sandpiper	0	0	1	1	0
BP	Baird's Sandpiper	0	0	0	1	0
PP	Pectoral Sandpiper	4	0	4	1	0
CV	Curlew Sandpiper	12	181	316	39	3
PS	Purple Sandpiper	211	41	103	464	668
DN	Dunlin	31812	93803	86651	238706	307786
RU	Ruff	170	373	530	452	647
JS	Jack Snipe	0	0	5	91	144
SN	Snipe	178	1665	2425	5084	8167
WK	Woodcock	0	2	0	12	41
BW	Black-tailed Godwit	8519	23519	35666	23921	26866
BA	Bar-tailed Godwit	4592	11744	20677	26570	24009
WM	Whimbrel	652	1143	171	79	13
CU	Curlew	42146	64049	67678	65864	55557
DR	Spotted Redshank	49	116	121	129	97
RK	Redshank	24554	64629	78243	93619	79164
GK	Greenshank	592	1630	1621	572	382
LY	Lesser Yellowlegs	0	0	1	0	1
GE	Green Sandpiper	264	478	181	164	131
OD	Wood Sandpiper	2	72	2	0	0
CS	Common Sandpiper	841	1058	237	76	40
PQ	Spotted Sandpiper	0	0	1	0	0
TT	Turnstone	1060	7695	11229	13287	12562
WF	Wilson's Phalarope	0	0	0	0	0
NK	Red-necked Phalarope	1	1	0	0	0
PL	Grey Phalarope	0	0	0	1	0
TOTAL WADERS		232459	695755	800719	1193757	1308382

Table 3. continued

	Dec	Jan	Feb	Mar	Apr	May	Jun
<i>sites</i>	1664	1774	1728	1685	686	583	566
OC	234868	214561	207041	135276	55267	32789	21273
IT	1	0	0	0	1	0	0
AV	4729	5760	3893	5203	2212	1485	1681
TN	0	0	0	0	0	2	0
LP	0	2	0	6	122	128	154
RP	6631	7662	6322	3793	3173	7545	806
KP	0	0	0	0	2	0	0
DO	0	0	0	0	0	2	0
GP	177717	208610	154960	66621	4836	117	128
GV	28883	32890	27270	26682	21793	21719	879
L.	345413	410308	264206	44588	5294	3452	10799
KN	244583	232627	227793	133041	67872	61088	15753
SS	6933	6320	6730	6554	9746	8765	303
LX	8	12	4	9	13	4	2
TK	0	0	0	0	0	2	1
WU	0	0	0	0	0	0	0
BP	0	0	0	0	0	0	0
PP	0	0	0	0	0	0	0
CV	0	0	0	5	2	6	1
PS	1042	1298	950	597	450	451	1
DN	332051	334093	315440	186708	56694	87951	3158
RU	632	884	874	695	205	40	52
JS	183	147	141	179	15	0	0
SN	7558	7732	6788	5837	996	89	59
WK	28	28	16	21	3	2	3
BW	21528	23879	21953	21224	19058	6022	3620
BA	30582	37497	31315	29524	4519	1830	340
WM	10	7	9	14	132	1790	52
CU	61524	75140	67378	53442	23804	2809	12228
DR	66	56	59	65	61	13	54
RK	75722	77058	72366	58002	32824	3734	4842
GK	267	317	247	257	134	81	54
LY	1	1	1	0	1	0	0
GE	96	98	94	109	41	5	62
OD	0	0	0	0	0	3	3
CS	43	35	26	30	87	239	193
PQ	0	0	0	0	0	0	0
TT	13007	12495	12120	10501	5329	2598	1007
WF	0	1	0	0	0	0	0
NK	0	0	0	0	0	0	1
PL	0	2	0	0	0	0	0
	1594106	1689520	1428010	788983	314686	244761	77509

Table 3. continued

Species		Jul	Aug	Sep	Oct	Nov
<i>Number of sites visited</i>		612	668	1142	1286	1308
MU	Mediterranean Gull	97	136	107	131	64
LU	Little Gull	127	358	7038	37	1
ON	Bonaparte's Gull	0	0	1	0	0
BH	Black-headed Gull	58407	101690	144576	148348	167090
IN	Ring-billed Gull	0	1	2	2	2
CM	Common Gull	3419	13717	24307	52972	31305
LB	Lesser Black-backed Gull	45841	22990	16243	16735	10848
YM	Western Yellow-legged Gull	109	164	132	27	9
YC	Caspian Gull	0	1	1	1	2
YG	Unidentified Yellow-legged Gull	26	0	25	105	23
HG	Herring Gull	24592	36407	39729	33698	46665
IG	Iceland Gull	0	0	0	0	0
GZ	Glaucous Gull	0	0	0	0	1
GB	Great Black-backed Gull	2057	3454	4784	7539	7116
KI	Kittiwake	1100	514	1117	682	89
UU	Unidentified gull	5588	10594	3943	150	0
VU	Unidentified large gull	0	0	0	0	0
TOTAL GULLS		141363	190026	242005	260427	263215

Species		Jul	Aug	Sep	Oct	Nov
<i>Number of sites visited</i>		628	668	1100	1206	1190
AF	Little Tern	760	329	8	2	0
BJ	Black Tern	1	86	38	5	0
TE	Sandwich Tern	11877	5546	2353	71	2
CN	Common Tern	3430	5222	703	58	0
RS	Roseate Tern	1	39	0	0	0
AE	Arctic Tern	922	275	43	8	0
UI	Common/Arctic Tern	2	0	0	0	0
UT	Unidentified tern	2	0	0	0	0
TOTAL TERNS		16995	11497	3145	144	2

Table 3. continued

	Dec	Jan	Feb	Mar	Apr	May	Jun
<i>sites</i>	1322	1411	1321	1320	582	466	472
MU	73	58	93	101	73	11	30
LU	1	12	7	3	24	34	24
ON	0	1	0	1	0	0	0
BH	165133	208015	187238	136117	38108	26507	33747
IN	2	4	0	3	0	0	1
CM	27207	44475	57817	44099	4952	1698	4366
LB	11462	11058	10270	10662	32523	30777	31798
YM	11	3	2	5	10	0	4
YC	3	2	3	0	0	0	0
YG	20	13	6	6	1	0	52
HG	53964	44282	88754	43084	31421	24756	24646
IG	0	12	25	12	2	1	0
GZ	0	9	21	5	1	0	0
GB	7007	7085	5441	3199	1831	1377	1611
KI	270	147	245	56	647	272	740
UU	157	45	50	0	620	262	417
VU	0	0	0	0	0	0	160
	265310	315221	349972	237353	110213	85695	97596

	Dec	Jan	Feb	Mar	Apr	May	Jun
<i>sites</i>	1192	1257	1192	1163	540	447	435
AF	0	0	0	0	1	320	642
BJ	0	0	0	0	0	0	0
TE	1	2	0	4	1155	2477	6535
CN	0	0	0	0	116	1861	3409
RS	0	0	0	0	0	0	3
AE	0	0	0	0	0	143	579
UI	0	0	0	0	0	6	5
UT	0	0	0	0	0	0	10
	1	2	0	4	1272	4807	11183

Table 4. Total numbers of waterbirds recorded by WeBS Core Counts in Northern Ireland in 2004/05. . Census total are indicated by '*'. .

Species		Jul	Aug	Sep	Oct	Nov
<i>Number of sites visited</i>		3	3	11	18	23
MS	Mute Swan	53	12	196	1048	1275
BS	Bewick's Swan	0	0	0	39	0
WS	Whooper Swan	1	0	20	1145	2002
PG	Pink-footed Goose	0	0	0	4	0
NW	Greenland White-fronted Goose	0	0	0	0	0
JE	Re-established Greylag Goose	12	0	77	107	182
CG	Greater Canada Goose	0	0	230	227	0
YE	Naturalised Barnacle Goose	0	0	0	0	0
QN	Nearctic Light-bellied Brent Goose	0	0	1022	*27988	1645
SU	Shelduck	15	28	652	1509	1639
WN	Wigeon	0	0	2071	9561	5834
GA	Gadwall	0	1	48	87	164
T.	Teal	0	0	1917	2212	5180
TA	Green-winged Teal	0	0	0	0	2
MA	Mallard	383	150	2803	6625	6694
PT	Pintail	0	0	113	134	364
SV	Shoveler	0	0	6	101	150
PO	Pochard	0	0	1	2346	1938
TU	Tufted Duck	0	0	182	2284	5200
SP	Scaup	0	0	0	239	2181
AY	Lesser Scaup	0	0	0	0	0
E.	Eider	431	3	1117	1502	846
LN	Long-tailed Duck	0	0	0	0	11
CX	Common Scoter	0	0	0	0	2
GN	Goldeneye	0	0	9	83	2869
SY	Smew	0	0	0	1	0
RM	Red-breasted Merganser	2	154	286	514	434
GD	Goosander	0	0	1	1	1
RY	Ruddy Duck	0	0	0	16	1
RH	Red-throated Diver	0	0	5	14	11
BV	Black-throated Diver	0	0	0	0	0
ND	Great Northern Diver	0	0	0	1	1
UL	Unidentified diver	0	0	0	1	0
LG	Little Grebe	7	0	127	619	686
GG	Great Crested Grebe	0	49	1546	1633	963
SZ	Slavonian Grebe	0	0	0	0	0
BN	Black-necked Grebe	0	0	0	0	1
CA	Cormorant	105	302	1024	2798	1703
SA	Shag	0	1	245	493	334
XU	Unidentified Cormorant/Shag	0	0	198	300	350
ET	Little Egret	0	5	6	0	3
H.	Grey Heron	60	28	207	405	316
WA	Water Rail	0	0	1	1	3
MH	Moorhen	8	0	38	197	146
CO	Coot	0	0	263	1896	2213
KF	Kingfisher	0	0	0	5	1
TOTAL WILDFOWL		1077	733	14411	39666	45345

Table 4. continued

	Dec	Jan	Feb	Mar	Apr	May	Jun
<i>sites</i>	23	26	21	22	2	1	1
MS	1922	1868	1692	987	2	18	3
BS	0	10	0	0	0	0	0
WS	2311	2652	2706	2188	0	2	0
PG	1	2	0	5	0	0	0
NW	67	102	115	39	0	0	0
JE	208	530	375	1402	0	0	0
CG	191	622	513	18	0	0	0
YE	0	1	0	0	0	0	0
QN	1325	1021	670	1893	538	0	0
SU	5010	5620	3328	3350	239	92	56
WN	6889	4463	3863	4789	8	0	0
GA	182	78	105	125	0	0	0
T.	3622	5847	4281	2452	290	0	0
TA	0	0	0	1	0	0	0
MA	6318	4996	3640	2346	61	10	60
PT	76	351	330	117	0	0	0
SV	95	156	83	19	0	0	0
PO	3016	7108	7110	2886	0	0	0
TU	7799	8774	11536	7623	0	0	0
SP	3473	3036	5806	4605	0	0	0
AY	0	0	1	0	0	0	0
E.	1712	1026	1285	581	26	0	0
LN	8	15	12	14	0	0	0
CX	26	0	0	0	0	0	0
GN	2653	4386	5667	6151	4	0	0
SY	0	1	4	4	0	0	0
RM	304	285	298	478	33	0	0
GD	2	0	0	1	0	0	0
RY	18	9	33	14	0	0	0
RH	7	20	3	48	2	0	0
BV	0	1	0	0	0	0	0
ND	1	6	2	8	0	0	0
UL	0	0	0	0	0	0	0
LG	673	419	442	243	0	0	0
GG	804	2065	841	844	20	0	0
SZ	0	4	2	10	0	0	0
BN	0	0	0	0	0	0	0
CA	1977	1267	1465	1300	43	9	10
SA	229	400	67	107	6	0	0
XU	136	0	127	0	40	0	0
ET	2	2	2	3	3	0	0
H.	319	258	241	130	11	1	3
WA	7	3	3	2	0	0	0
MH	171	239	236	190	1	0	0
CO	3758	2675	2861	1329	0	0	0
KF	3	2	1	2	0	0	0
	55315	60320	59746	46304	1327	132	132

Table 4. continued

	Species	Jul	Aug	Sep	Oct	Nov
	<i>Number of sites visited</i>	3	3	11	18	23
OC	Oystercatcher	926	1468	12937	20366	14266
RP	Ringed Plover	53	197	420	747	597
KL	Killdeer	0	0	0	0	0
GP	Golden Plover	0	0	1796	6876	11637
GV	Grey Plover	0	0	37	87	977
L.	Lapwing	27	110	744	4023	13159
KN	Knot	1	7	669	508	2405
SS	Sanderling	4	20	11	10	11
CV	Curlew Sandpiper	0	0	1	1	0
PS	Purple Sandpiper	0	0	3	18	1
DN	Dunlin	176	693	1663	3126	8970
RU	Ruff	0	0	2	24	4
JS	Jack Snipe	0	0	1	0	0
SN	Snipe	2	5	15	91	135
BW	Black-tailed Godwit	2	116	1715	1462	782
BA	Bar-tailed Godwit	2	35	91	670	1189
WM	Whimbrel	20	4	2	4	1
CU	Curlew	1159	925	3881	5929	4612
RK	Redshank	132	1181	7640	10498	6959
GK	Greenshank	15	31	112	181	320
GE	Green Sandpiper	1	0	0	0	0
CS	Common Sandpiper	0	4	0	0	0
TT	Turnstone	0	112	731	1940	835
	TOTAL WADERS	2520	4908	32471	56561	66860

	Species	Jul	Aug	Sep	Oct	Nov
	<i>Number of sites visited</i>	3	2	10	12	14
MU	Mediterranean Gull	0	0	3	3	3
LU	Little Gull	0	0	0	0	0
BH	Black-headed Gull	1199	551	5873	9241	11937
IN	Ring-billed Gull	0	0	0	0	2
CM	Common Gull	1005	254	2926	3210	4217
LB	Lesser Black-backed Gull	49	53	369	600	313
HG	Herring Gull	13	68	3236	4759	8499
IG	Iceland Gull	0	0	0	0	0
GZ	Glaucous Gull	0	0	0	0	0
GB	Great Black-backed Gull	11	14	342	519	477
KI	Kittiwake	0	0	7	0	0
	TOTAL GULLS	2277	940	12756	18332	25448

	Species	Jul	Aug	Sep	Oct	Nov
	<i>Number of sites visited</i>	3	3	9	10	8
TE	Sandwich Tern	113	220	289	15	0
CN	Common Tern	0	0	10	0	0
	TOTAL TERNS	113	220	299	15	0

Table 4. continued

	Dec	Jan	Feb	Mar	Apr	May	Jun
<i>sites</i>	23	26	21	22	2	1	1
OC	14631	15772	12333	10849	423	34	40
RP	481	381	380	157	81	20	0
KL	0	0	1	0	0	0	0
GP	15296	12537	16252	13208	1500	0	0
GV	149	163	122	98	2	0	0
L.	21055	16487	11426	1158	0	0	0
KN	3122	1808	5919	1705	0	1	0
SS	56	16	12	9	282	6	0
CV	0	0	0	0	0	0	0
PS	0	38	4	86	0	0	0
DN	8266	6782	9185	5501	52	290	25
RU	2	5	0	5	0	0	0
JS	1	0	0	1	0	0	0
SN	103	57	47	91	0	0	0
BW	484	596	460	703	26	1	0
BA	1028	277	1494	894	6	0	0
WM	0	0	2	0	0	0	0
CU	4187	7653	5664	4535	124	1	51
RK	6484	6880	5844	7903	1035	1	4
GK	140	94	116	78	1	0	0
GE	0	0	0	0	0	0	0
CS	0	0	0	0	0	0	0
TT	759	1404	706	1882	368	0	0
	76244	70950	69967	48863	3900	354	120

	Dec	Jan	Feb	Mar	Apr	May	Jun
<i>sites</i>	16	17	13	13	1	1	1
MU	0	1	0	0	0	0	0
LU	0	1	0	0	0	0	0
BH	11822	11063	14218	10759	40	16	150
IN	1	0	1	0	0	0	0
CM	4853	3193	3623	3015	14	14	40
LB	186	92	347	375	0	3	50
HG	6990	8012	4057	3347	11	8	12
IG	2	11	8	4	0	0	0
GZ	4	1	15	2	0	0	0
GB	882	1250	930	1348	6	3	12
KI	0	0	0	0	0	0	0
	24740	23624	23199	18850	71	44	264

	Dec	Jan	Feb	Mar	Apr	May	Jun
<i>sites</i>	9	10	8	9	1	1	1
TE	0	7	0	1	6	30	20
CN	0	0	0	0	0	0	1
	0	7	0	1	6	30	21

Table 5. Total numbers of waterbirds recorded by I-WeBS in the Republic of Ireland in 2004/05.

Species	Sep	Oct	Nov	Dec	Jan	Feb	Mar
<i>Number of sites visited</i>	98	114	161	138	233	159	119
Mute Swan	943	1576	3565	2164	3659	1799	1153
Black Swan	0	0	1	1	0	0	0
Bewick's Swan	0	8	13	28	220	156	0
Whooper Swan	27	1431	5330	2924	5468	2331	2591
Pink-footed Goose	0	0	4	11	9	3	2
Greater Canada Goose	24	19	98	36	203	7	7
Greenland White-fronted Goose	8	401	7603	9909	10062	769	384
Greylag Goose	190	392	5766	2657	1732	681	2191
Snow Goose	0	0	0	1	1	0	0
Barnacle Goose	0	76	856	884	3508	727	1
Dark-bellied Brent Goose	0	0	0	0	0	1	0
Light-bellied Brent Goose	1008	3846	17346	15752	11542	13539	9313
Black Brant	0	0	1	0	0	0	0
Feral/hybrid Goose	26	20	0	18	17	25	24
Shelduck	246	2186	3760	5834	6618	5557	3031
Wigeon	2978	18221	37558	31801	47440	20047	7239
American Wigeon	1	1	1	0	0	1	0
Gadwall	92	168	358	244	616	207	95
Teal	2401	5751	14854	13748	23565	9936	5399
Green-winged Teal	0	0	2	0	0	1	0
Mallard	7277	7179	9459	7448	9559	4273	2547
Pintail	85	73	401	899	1024	694	171
Garganey	0	0	0	0	0	1	0
Shoveler	56	339	1368	1685	1444	1154	324
Pochard	5	296	9531	2201	6854	3683	414
Ring-necked Duck	0	0	0	2	1	0	1
Ferruginous Duck	0	0	0	0	0	1	0
Tufted Duck	404	1016	8007	3213	10256	2900	1294
Scaup	0	612	184	862	582	403	4
Eider	14	90	5	3	18	20	19
Long-tailed Duck	0	3	33	22	31	45	26
Common Scoter	2622	786	2991	1275	3000	2227	2236
Surf Scoter	0	1	3	0	0	3	0
Velvet Scoter	0	0	6	2	0	0	0
Goldeneye	1	78	803	805	1436	616	313
Smew	0	0	0	1	1	0	0
Red-breasted Merganser	240	439	804	436	761	452	576
Goosander	0	0	0	3	0	3	0
Ruddy Duck	0	2	0	1	2	2	0
Unidentified Duck	0	0	0	0	50	0	0
Red-throated Diver	128	27	195	266	196	103	112
Black-throated Diver	0	0	9	2	14	4	21
Great Northern Diver	3	42	226	82	443	178	389
Unidentified Diver	0	0	0	33	0	0	0
Little Grebe	344	419	609	533	688	333	171
Great Crested Grebe	186	531	771	500	987	474	160
Red-necked Grebe	0	0	0	0	1	0	0
Slavonian Grebe	0	1	0	6	4	3	10
Black-necked Grebe	0	0	1	1	0	0	0
Cormorant	2245	1876	2831	1532	2911	1546	1019
Unidentified Cormorant/Shag	198	300	350	136	0	127	0
Little Egret	334	169	202	157	206	192	124
Grey Heron	534	508	723	440	629	289	245
Water Rail	13	6	20	13	20	18	13
Moorhen	357	401	344	365	558	380	302
Coot	1541	3566	23144	8757	12073	2421	526
Kingfisher	10	15	14	8	10	9	9
TOTAL WILDFOWL	24541	52871	160150	117701	168419	78341	42456

Table 5. continued

Species	Sep	Oct	Nov	Dec	Jan	Feb	Mar
Oystercatcher	18264	23273	27293	19866	30158	22062	13365
Avocet	0	0	0	3	1	1	0
Ringed Plover	1743	2678	5071	2672	2493	1972	549
Golden Plover	2655	35837	86540	84160	111756	47875	25512
Grey Plover	171	445	1113	788	1547	1693	392
Lapwing	1095	8271	59046	53615	118985	25892	909
Knot	1864	4675	4870	12296	11463	6483	3073
Sanderling	102	493	1524	1917	1330	1877	794
Little Stint	0	0	1	0	0	0	0
Baird's Sandpiper	1	0	0	0	0	0	0
Pectoral Sandpiper	0	1	0	0	0	0	0
Curlew Sandpiper	31	4	0	0	2	0	0
Purple Sandpiper	0	2	71	13	61	24	66
Dunlin	4692	11258	38357	27977	46050	29379	6508
Ruff	13	20	3	686	456	3	2
Jack Snipe	0	1	17	23	24	19	23
Snipe	104	271	450	564	625	507	223
Woodcock	0	0	3	2	1	1	4
Black-tailed Godwit	8247	5270	11738	8745	9149	8678	5091
Bar-tailed Godwit	1152	4517	5831	5829	6480	5552	4846
Whimbrel	16	61	0	2	1	1	1
Curlew	8942	9570	16044	13615	23912	15669	6883
Spotted Redshank	2	4	3	4	4	2	0
Redshank	10594	11455	16795	10632	14836	10208	9396
Greenshank	395	383	505	378	496	402	274
Green Sandpiper	2	2	1	2	5	7	0
Wood Sandpiper	0	0	0	0	0	0	0
Common Sandpiper	6	3	3	2	2	1	0
Turnstone	1080	1536	2883	1698	2056	1805	1883
Grey Phalarope	1	30	0	0	0	0	0
TOTAL WADERS	61172	120060	278162	245489	381893	180113	79794
Species	Sep	Oct	Nov	Dec	Jan	Feb	Mar
Mediterranean Gull	32	16	16	27	15	22	12
Little Gull	2	1	5	0	0	0	2
Black-headed Gull	14771	13342	14906	14325	22796	15008	12207
Ring-billed Gull	1	1	3	3	2	3	1
Common Gull	4844	6445	7401	6339	9200	3463	7267
Lesser Black-backed Gull	2028	1167	873	1340	1812	366	811
Herring Gull	1549	1386	1945	1226	2785	1465	1117
Iceland Gull	0	0	0	2	10	14	4
Glaucous Gull	0	0	0	0	17	16	13
Great Black-backed Gull	1244	1354	1341	1197	1523	1176	740
Unidentified gull	0	0	0	69	0	0	45
Yellow-legged Gull	0	0	0	0	0	1	0
TOTAL GULLS	24471	23712	26490	24528	38160	21534	22219
Species	Sep	Oct	Nov	Dec	Jan	Feb	Mar
Sandwich Tern	2103	3	0	2	0	0	5
Common Tern	100	0	0	1	1	0	0
Roseate Tern	117	0	0	0	0	0	0
Arctic Tern	78	1	0	0	0	0	0
Unidentified Tern	248	0	0	0	0	0	0
TOTAL TERNS	2646	4	0	3	1	0	5